



ELETTRONICA
TIRRITO

MADE IN ITALY



ABOUT US

THE COMPANY

Elettronica Tirrito s.r.l is a company active since 2016 that inherits the clientele and expertise of Elettronica Tirrito s.a.s, a company that boasts more than twenty years of experience in the field of IoT systems and a manufacturer of led lighting under its own brand.

It mainly carries out design and production activities for various types of remote control and remote management systems and systems relating to street lighting, By foreseeing the use of the most efficient and new technologies available on the world market, it has become a leader in the remote control and street lighting sectors for what concerns the national territory.

DIVISIONS



Lighting

IoT
Telemetry
Systems
&
Smart City



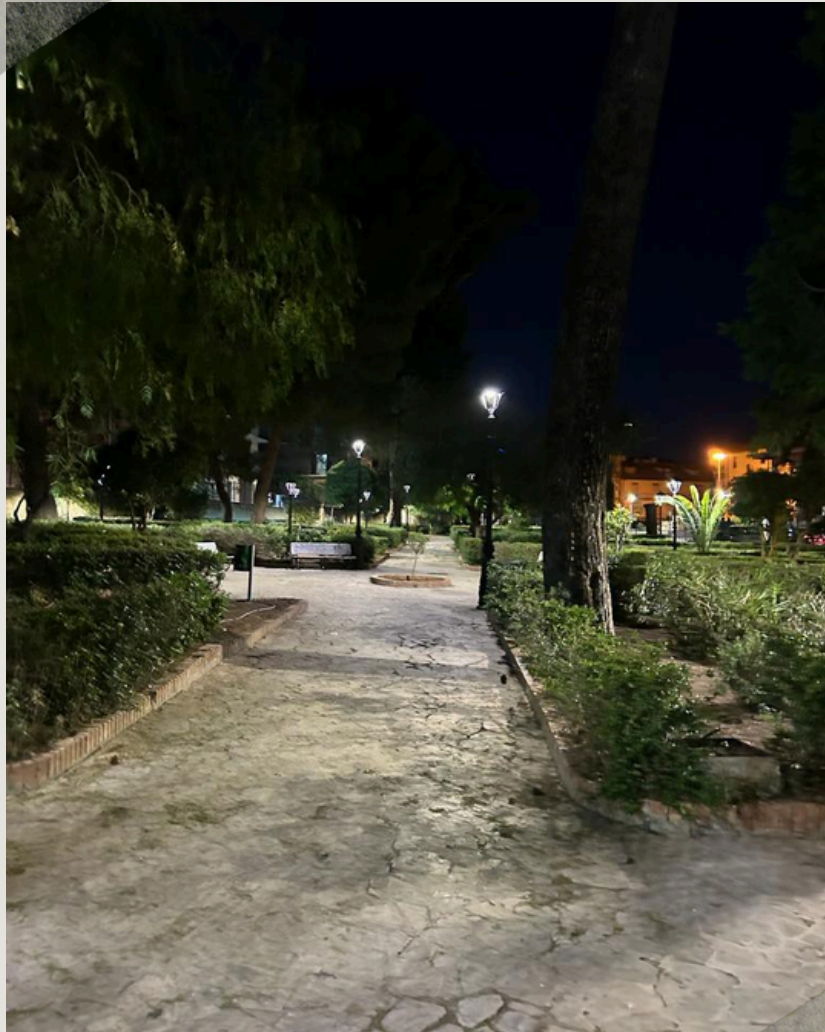
Photovoltaic
System
&
Power Box

OUR PRODUCTS

Elettronicca Tirrito s.r.l is a company born in the heart of Sicily, which makes the speed of design and prototyping its strong point, allowing it to quickly translate ideas into real systems.

It offers solutions based on highly efficient and engineered LED lighting, and has different types of bodies and powers, from a few Watts to thousands of Watts for contexts ranging from retail to public lighting, sports facilities and large areas;

The founders of ET having an engineering background focused on electronic systems have developed over the years several IoT systems applications such as: BACS, HomeAutomation, StreetTelemetry Systems, Water Monitor, etc.



LED LIGHTING

Elettronicca Tirrito s.r.l produces and markets various types of light covers with an attractive design and high performance.

LED lighting is sweeping the public and private lighting sector for indoor and outdoor environments.

There are many advantages associated with the use of LEDs as a light source, including:

- Energy savings of over 50% compared to traditional lamps;
- Maximum maintenance savings;
- Long life (L90B10 >320,000h);
- High efficiency (>185 lm/W);
- RoHs material (free of lead and heavy metals);
- Beam control (light only where needed);
- Compact size (innovative structure);
- Safe light (no infrared or ultraviolet rays);
- Easy intensity regulation (intelligent electronics);
- Light color stability (constant shade over time);
- High color rendering index (CRI);
- Reduction of CO2 emissions.



LED STREET LIGHT

LED street lights are LED devices with excellent efficiency, allowing for high energy savings.

The road lighting fixtures produced by ET are characterised by a die-cast aluminium body, painted with epoxy powders compliant with the UNI EN ISO 9227 standard.

They feature an ultra-glossy screen, thanks to the transparent glass that is only 4 mm thick.

The electrical compartment is separated from the optical compartment and the possibility of opening without the use of tools allows for the easy detection of any malfunctions, thus acting in accordance with CAM criteria.



Characteristics:

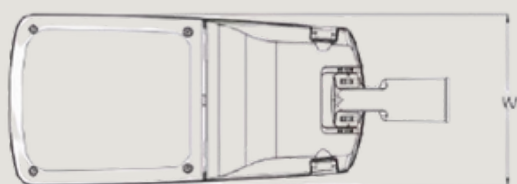
- Optical group Multiple PBC Ledil 12 Cr
- Insulation class: II;
- Degrees of protection: IP66;
- Quality marks: All housed components comply with CE ENEC regulations;
- Mounting: Pole top/ with ϕ 60mm arm;
- Appliance inclination: $-15^{\circ} +15^{\circ}$ with graduated scale;
- Luminous intensity category: \geq G4;
- Ipea index: up to A8+;
- Photobiological Risk: RGO - Exempt;
- Type approval tests by SGS. Compliance to EN 55015:2013, EN 61000-3-2:2014, EN 6100-3-3:2013, EN 61547:2009, EN 62493:2015, CEI EN 62471:2010, IEC/TR 62778:2014;
- Remote control: possibility of inserting Nema Socket;
- Electrical accessories: Dimmable electronic power supply in class II, IP67/IP40, Meanwell, Inventronics or Osram or other similar in quality and performance;
- Dimming/Smart: 1-10V, PWM, Resistance, Dali or Timer on request. Compartment able to accommodate HW parts for Smart solutions



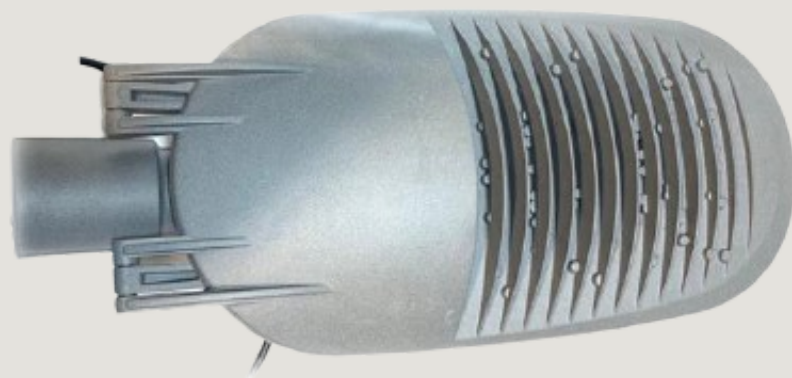
GIOVE LED STREET LIGHT



Codice	Potenza	Flusso effettivo	CCT	Dimensioni mm	Peso
Giove 40	40W	5700 lm	2200°K-3000°K-4000°K-5700°K	627x271x103	6 Kg
Giove 60	60W	8736 lm	2200°K-3000°K-4000°K-5700°K	627x271x103	6 Kg
Giove 80	80W	11700 lm	2200°K-3000°K-4000°K-5700°K	627x271x103	6 Kg
GioveL 120	120W	17100 lm	2200°K-3000°K-4000°K-5700°K	768x301x104	7.4 Kg
GioveL 150	150W	21375 lm	2200°K-3000°K-4000°K-5700°K	768x301x104	7.4 Kg
GioveL180	180W	26676 lm	2200°K-3000°K-4000°K-5700°K	768x301x104	7.4 Kg



SATURN LED STREET LIGHT



Codice	Potenza	Flusso effettivo	CCT	Dimensioni mm	Peso
Saturno 40	40W	5700 lm	2200°K-3000°K-4000°K-5700°K	530x230x105	5 Kg
Saturno 60	60W	8736 lm	2200°K-3000°K-4000°K-5700°K	530x230x105	5 Kg
Saturno 80	80W	11700 lm	2200°K-3000°K-4000°K-5700°K	530x230x105	5 Kg



SOSPENSION LED

The LED stretched armatures allow for effective street lighting that can be adapted to different contexts, ensuring greater liveability and safety in common spaces in urban areas.

These are armatures that are mounted on steel cables in the centre of the road or with a 3/4 gas connection.

Characteristics:

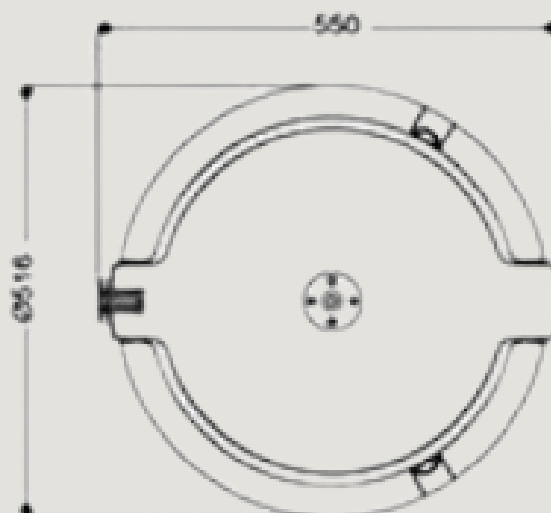
- Optical group Multiple PBC Ledil 12 Cree XP-G3 LEDs 1.6 mm RoHs compliant;
- Insulation class: II;
- Degree of protection: IP66
- Quality marks: All housed components comply with CE ENEC regulations;
- Mounting: Suspension;
- Luminous intensity category: \geq G4;
- Ipea index: up to A8+;
- Remote control: possibility of inserting Nema Socket;
- Electrical accessories: Dimmable electronic power supply in class II, IP67/IP40, Meanwell, Inventronics or Osram or other similar in quality and performance;
- Dimming/Smart: 1-10V, PWM, Resistance, Dali or Timer on request. Compartment able to accommodate HW parts for Smart solutions;

STEEL CABLE LAMP

DELTA SUSPENSION



Codice	Potenza	Flusso effettivo	CCT	Dimensioni mm	Peso
Delta 40	40W	5700 lm	2200°K-3000°K-4000°K-5700°K	500x138xØ516	5 Kg
Delta 60	60W	8736 lm	2200°K-3000°K-4000°K-5700°K	500x138xØ516	5 Kg
Delta 80	80W	11700 lm	2200°K-3000°K-4000°K-5700°K	500x138xØ516	5 Kg
Delta 120	120W	16387.5lm	2200°K-3000°K-4000°K-5700°K	500x138xØ516	5 Kg



STEEL CABLE LAMP

SIRIO SUSPENSION



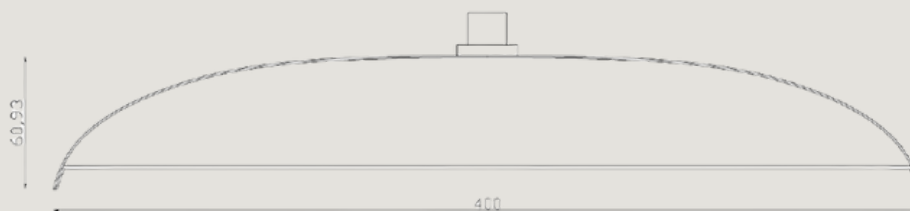
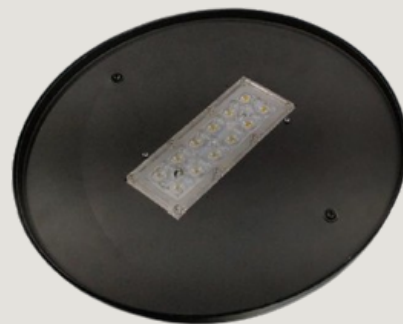
Codice	Potenza	Flusso effettivo	CCT	Dimensioni mm	Peso
Sirio_S 40	40W	5700 lm	2200°K-3000°K-4000°K-5700°K	160xØ350	3.5 Kg
Sirio_S 60	60W	8736 lm	2200°K-3000°K-4000°K-5700°K	160xØ350	3.5 Kg
Sirio_S 80	80W	11700 lm	2200°K-3000°K-4000°K-5700°K	160xØ350	3.5 Kg



ASTRO LED STREET LIGHT



Codice	Potenza	Flusso effettivo	CCT	Dimensioni dissipatore cm	Peso
Astro 40	40W	5700 lm	2200°K-3000°K-4000°K-5700°K	Ø40	5 Kg
Astro 60	60W	8892 lm	2200°K-3000°K-4000°K-5700°K	Ø40	5 Kg



GARDEN LED STREET LIGHT

The Garden Light LED fixtures are street furniture devices with a pole-top attachment for lighting streets and squares.

Characteristics:

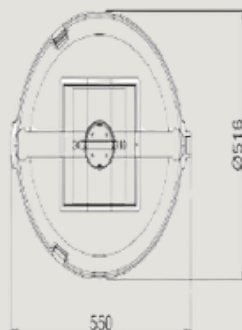
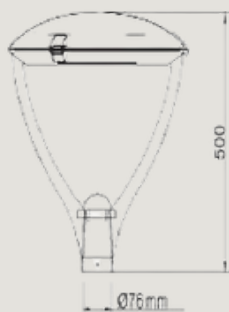
- Optical group Multiple PBC Ledil 12 Cree XP-G3 LEDs 1.6 mm RoHs compliant;
- Insulation class: II;
- Degrees of protection: IP66;
- Quality marks: All housed components comply with CE ENEC regulations;
- Mounting: on pole;
- Luminous intensity category: \geq G4;
- Ipea index: up to A8+;
- Remote control: possibility of inserting Nema Socket;
- Electrical accessories: Dimmable electronic power supply in class II, IP67/IP40, Meanwell, Inventronics or Osram or other similar in quality and performance;
- Dimming/Smart: 1-10V, PWM, Resistance, Dali or Timer on request. Compartment able to accommodate HW parts for Smart solutions.

GARDEN LED STREET LIGHT

DELTA GARDEN



Codice	Potenza	Flusso effettivo	CCT	Dimensioni mm	Peso
Delta_G 40	40W	5700 lm	2200°K-3000°K-4000°K-5700°K	500xØ500	5Kg
Delta_G 60	60W	8736 lm	2200°K-3000°K-4000°K-5700°K	500xØ500	5 Kg
Delta_G 80	80W	11700 lm	2200°K-3000°K-4000°K-5700°K	500xØ500	5 Kg
Delta_G 120	120W	17100 lm	2200°K-3000°K-4000°K-5700°K	500xØ500	5 Kg

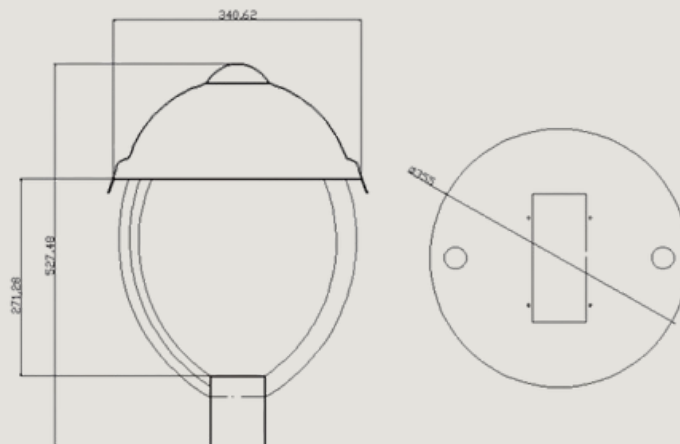


GARDEN LED STREET LIGHT

SIRIO GARDEN



Codice	Potenza	Flusso effettivo	CCT	Dimensioni mm	Peso
Sirio_G 40	40W	5700 lm	2200°K-3000°K-4000°K-5700°K	520xØ600	5Kg
Sirio_G 60	60W	8736 lm	2200°K-3000°K-4000°K-5700°K	520xØ600	5 Kg
Sirio_G 80	80W	11700 lm	2200°K-3000°K-4000°K-5700°K	520xØ600	5 Kg



GARDEN LAMP

PLAFONIERA ARTISTICA

The artistic ceiling lights, the Lampara and the LED bells are street furniture devices with a pole-top connection or with a gas connection arm for lighting streets and squares.

Characteristics:

- Optical group Multiple PBC Ledil 12 Cree XP-G3 LEDs 1.6 mm RoHs compliant;
- Insulation class: II;
- Maintenance: Inspectable lighting body, can be opened using a hexagonal key;
- Appliance tilt: NA;
- Degrees of protection: IP65 (Optics IP67);
- Quality marks: All housed components comply with CE ENEC regulations;
- Mounting: Pole-top/ with gas connection arm;
- Luminous intensity category: \geq G4;
- Ipea Index: from A3+ to A6+ in accordance with the Ministerial Decree 09/27/2017 (C.A.M);
- Remote control: possibility of inserting Nema Socket;
- Electrical accessories: Dimmable electronic power supply in class II, IP67/IP40, Meanwell, Inventronics or Osram or other similar in quality and performance;
- Dimming/Smart: 1-10V, PWM, Resistance, Dali or Timer on request. Compartment able to accommodate HW parts for Smart solutions;

ARMATURA ARTISTICA

PLAFONIERA ARTISTICA



Codice	Potenza	Flusso effettivo	CCT	Dimensioni mm	Peso
Pla_Art_M 40	40W	5700 lm	2200°K-3000°K-4000°K-5700°K	350x350x640	6Kg
Pla_Art_M 60	60W	8736 lm	2200°K-3000°K-4000°K-5700°K	350x350x640	6 Kg
Pla_Art_M 80	80W	11700 lm	2200°K-3000°K-4000°K-5700°K	350x350x640	6 Kg
Pla_Art_L 40	40W	5700 lm	2200°K-3000°K-4000°K-5700°K	450x450x750	8 Kg
Pla_Art_L 60	60W	8736 lm	2200°K-3000°K-4000°K-5700°K	450x450x750	8 Kg
Pla_Art_L 80	80W	11700 lm	2200°K-3000°K-4000°K-5700°K	450x450x750	8 Kg

Plafoniera Artistica_M



Plafoniera Artistica_L

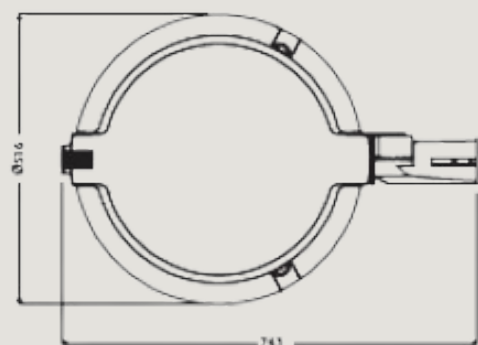
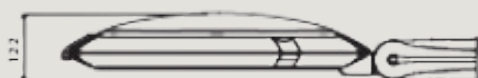


ARMATURA ARTISTICA

DELTA POLE



Codice	Potenza	Flusso effettivo	CCT	Dimensioni dissipatore mm	Peso
Delta P 40	40W	5700 lm	2200°K-3000°K-4000°K-5700°K	743x516x122	5 Kg
Delta P 60	60W	8607 lm	2200°K-3000°K-4000°K-5700°K	743x516x122	5 Kg
Delta P 80	80W	11400 lm	2200°K-3000°K-4000°K-5700°K	743x516x122	5 Kg
Delta P 120	120W	17100 lm	2200°K-3000°K-4000°K-5700°K	743x516x122	5 Kg



ARMATURA ARTISTICA

DELTA SUSPENSION POLE ATTACK



Codice	Potenza	Flusso effettivo	CCT	Dimensioni dissipatore mm	Peso
Delta S 40	40W	5700 lm	2200°K-3000°K-4000°K-5700°K	500x138x516Ø	5 Kg
Delta S 60	60W	8607 lm	2200°K-3000°K-4000°K-5700°K	500x138x516Ø	5 Kg
Delta S 80	80W	11400 lm	2200°K-3000°K-4000°K-5700°K	500x138x516Ø	5 Kg
Delta S 120	120W	17100 lm	2200°K-3000°K-4000°K-5700°K	500x138x516Ø	5 Kg



ARMATURA ARTISTICA

LAMPARA



Codice	Potenza	Flusso effettivo	CCT	Dimensioni	Peso
Lampara 40	40W	5700 lm	2200°K-3000°K-4000°K-5700°K	560*300	6 Kg
Lampara 60	60W	8892 lm	2200°K-3000°K-4000°K-5700°K	560*300	6 Kg
Lampara 80	80W	11400 lm	2200°K-3000°K-4000°K-5700°K	560*300	6 Kg
Lampara 120	120W	17100 lm	2200°K-3000°K-4000°K-5700°K	560*300	6 Kg



A	57 cm
B	40 cm

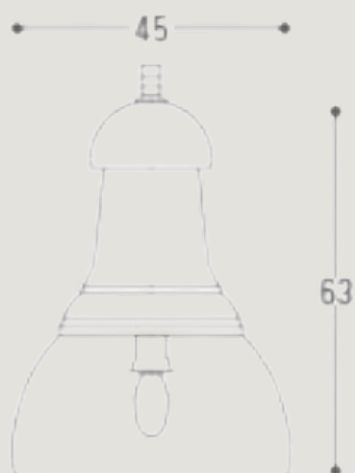


ARMATURA ARTISTICA

CAMPANA



Codice	Potenza	Flusso effettivo	CCT	Dimensioni	Peso
Campana 40	40W	5700 lm	2200°K-3000°K-4000°K-5700°K	450*630	8 Kg
Campana 60	60W	8892 lm	2200°K-3000°K-4000°K-5700°K	450*630	8 Kg
Campana 80	80W	11400 lm	2200°K-3000°K-4000°K-5700°K	450*630	8 Kg



SPORTS CENTER LIGHTING



KIT REFITTING

The Refitting Kit is a lighting fixture that allows you to replace old light sources with new LED modules without damaging the existing structure and ensuring high energy savings.

Characteristics:

- Optical group Multiple PBC Ledil 12 Cree XP-G3 LEDs 1.6 mm RoHs compliant;
- Insulation class: II;
- Degrees of protection: Whole body IP67/IP40; lens IP67; power supply IP67/IP40, watertight power connector IP68 on request;
- Quality marks: All housed components comply with CE ENEC regulations;
- Luminous intensity category: \geq G4;
- Ipea Index: from A3+ to A6+ in accordance with the Ministerial Decree 09/27/2017 (C.A.M);
- Remote control: possibility of inserting Nema Socket;
- Electrical accessories: Dimmable electronic power supply in class II, IP67/IP40, Meanwell, Inventronics or Osram or other similar in quality and performance;
- Dimming/Smart: 1-10V, PWM, Resistance, Dali or Timer on request. Compartment able to accommodate HW parts for Smart solutions.

KIT REFITTING



Codice	Potenza	Flusso effettivo	CCT	Dimensioni dissipatore cm	Peso
Ref plaf 40	40W	5700 lm	2200°K-3000°K-4000°K-5700°K	13*20*3	2 Kg
Ref plaf 60	60W	8892 lm	2200°K-3000°K-4000°K-5700°K	20*20*3	3 Kg
Ref plaf 75	75W	10650 lm	2200°K-3000°K-4000°K-5700°K	25*20*3	3 Kg
Ref plaf 80	80W	11400 lm	2200°K-3000°K-4000°K-5700°K	25*20*3	3 Kg
Ref plaf 115	115W	17004 lm	2200°K-3000°K-4000°K-5700°K	AD HOC	6 Kg
Ref plaf 150	150W	22308 lm	2200°K-3000°K-4000°K-5700°K	AD HOC	8 Kg
Ref plaf 200	200W	29640 lm	2200°K-3000°K-4000°K-5700°K	AD HOC	8 Kg



PROJECTOR VEGA

New generation LED projector, innovative design that integrates elegantly with existing street furniture and in innovative contexts.

The body and upper cap are made of die-cast aluminium, equipped with cooling fins for optimal dissipation and extended life.

Diffuser in tempered glass, 4mm thick with high transparency (greater than 95%).

Silicone gaskets ensure maximum sealing against atmospheric agents;

Adjustable fixing bracket and external stainless steel screws. Dimmable electronic power supply that can be fixed on the bracket.

Characteristics:

- Optical group Multiple PBC Ledil 12 Cree XP-G3 LEDs 1.6 mm RoHs compliant;
- Insulation class: I-II;
- Degrees of protection: IP65;
- Quality marks: All housed components comply with CE ENEC regulations;
- Mounting: Via bracket;
- Luminous intensity category: \geq G4;
- Ipea Index: from A3+ to A6+ in accordance with the Ministerial Decree 09/27/2017 (C.A.M);
- Electrical accessories: Dimmable electronic power supply in class II, IP67/IP40, Meanwell, Inventronics or Osram or other similar in quality and performance;
- Dimming/Smart: 1-10V, PWM, Resistance, Dali or Timer on request. Compartment able to accommodate HW parts for Smart solutions.

PROJECTOR

VEGA



Codice	Potenza	Flusso effettivo	CCT	Dimensioni mm	Peso
Vega B5 40	40W	5700 lm	2200°K-3000°K-4000°K-5700°K	240x300x78	6Kg
Vega B5 60	60W	8736 lm	2200°K-3000°K-4000°K-5700°K	240x300x78	6 Kg
Vega B5 80	80W	11700 lm	2200°K-3000°K-4000°K-5700°K	240x300x78	6 Kg
Vega B5 120	120W	17100 lm	2200°K-3000°K-4000°K-5700°K	240x300x78	6 Kg
Vega B9 150	150W	21750 lm	2200°K-3000°K-4000°K-5700°K	450x300x78	10Kg
Vega B9 190	190W	27075 lm	2200°K-3000°K-4000°K-5700°K	450x300x78	10Kg
Vega B9 210	210W	29925 lm	2200°K-3000°K-4000°K-5700°K	450x300x78	10Kg
Vega B9 225	225W	34560 lm	2200°K-3000°K-4000°K-5700°K	450x300x78	10Kg
Vega B9 250	250W	37050 lm	2200°K-3000°K-4000°K-5700°K	450x300x78	10Kg
Vega B16 400	400W	60000 lm	2200°K-3000°K-4000°K-5700°K	870x300x78	17Kg
Vega B16 500	500W	74100 lm	2200°K-3000°K-4000°K-5700°K	870x300x78	17Kg

FLOODLIGHT



Codice	Potenza	Flusso effettivo	CCT	Dimensioni mm	Peso
Floodlight 40	40W	5700 lm	2200°K-3000°K-4000°K-5700°K	206x158x138	2.5Kg
Floodlight 60	60W	8736 lm	2200°K-3000°K-4000°K-5700°K	206x158x138	2.5Kg
Floodlight 80	80W	11700 lm	2200°K-3000°K-4000°K-5700°K	206x158x138	2.5Kg



RGBW FLOODLIGHT

RGBW projectors are innovative light fixtures that contain a 4-in-1 chip with red, green, blue and white LEDs. So, in addition to the millions of shades produced with RGB, RGBW adds more combinations with the extra white diode.

To set the RGBW colors of the projectors, a DMX - Wifi console is used via Android APP and proprietary WebAp DMX-*RGBW-SettingApp*, capable of punctually setting the RGBW values of each projector from 0 to 255, creating and loading quick scenarios for groups or individual projectors.

Characteristics:

- CREE- xpe R G B W - DMX optical group;
- Insulation class: I Div II;
- Degrees of protection: IP65;
- Quality marks: All housed components comply with CE ENEC regulations;
- Mounting: By bracket, recessed;
- Electrical accessories: Dimmable electronic power supply in class II, IP67/IP40, Meanwell, Inventronics or Osram or other similar in quality and performance.







DMX WEB CLOUD APP

<input checked="" type="checkbox"/>	Geraci 1 - Inground da 1 a 11	007			
<input checked="" type="checkbox"/>	Geraci 2 - Proiettori costone da 1 a 7	008			
<input checked="" type="checkbox"/>	Geraci 3 - Segnapasso viale	009			

Home

I MIEI PROIETTORI

Select	ID	Colore	R	G	B	W
<input type="checkbox"/>	1		<input type="text" value="0"/>	<input type="text" value="255"/>	<input type="text" value="0"/>	<input type="text" value="0"/>
<input type="checkbox"/>	2		<input type="text" value="255"/>	<input type="text" value="255"/>	<input type="text" value="255"/>	<input type="text" value="0"/>
<input type="checkbox"/>	3		<input type="text" value="255"/>	<input type="text" value="0"/>	<input type="text" value="0"/>	<input type="text" value="0"/>
<input type="checkbox"/>	4		<input type="text" value="255"/>	<input type="text" value="0"/>	<input type="text" value="0"/>	<input type="text" value="0"/>
<input type="checkbox"/>	5		<input type="text" value="145"/>	<input type="text" value="80"/>	<input type="text" value="60"/>	<input type="text" value="0"/>
<input type="checkbox"/>	6		<input type="text" value="145"/>	<input type="text" value="80"/>	<input type="text" value="60"/>	<input type="text" value="0"/>
<input type="checkbox"/>	7		<input type="text" value="145"/>	<input type="text" value="80"/>	<input type="text" value="60"/>	<input type="text" value="0"/>
<input type="checkbox"/>	8		<input type="text" value="255"/>	<input type="text" value="255"/>	<input type="text" value="255"/>	<input type="text" value="0"/>
<input type="checkbox"/>	9		<input type="text" value="255"/>	<input type="text" value="255"/>	<input type="text" value="255"/>	<input type="text" value="0"/>
<input type="checkbox"/>	10		<input type="text" value="255"/>	<input type="text" value="255"/>	<input type="text" value="255"/>	<input type="text" value="0"/>
<input type="checkbox"/>	11		<input type="text" value="255"/>	<input type="text" value="255"/>	<input type="text" value="255"/>	<input type="text" value="0"/>
<input type="checkbox"/>	12		<input type="text" value="255"/>	<input type="text" value="255"/>	<input type="text" value="255"/>	<input type="text" value="0"/>

Color picker

Scegli un colore per i proiettori selezionati

Colore

R

G

B

W

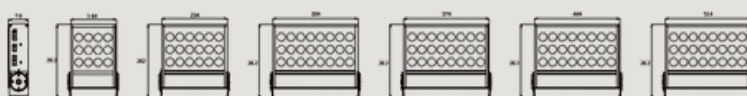
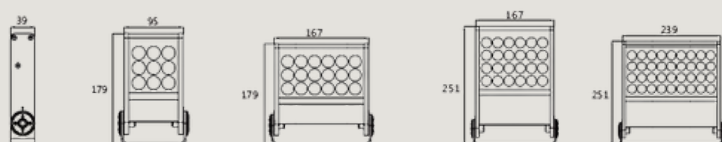
I MIEI SCENARI

AGGIUNGI SCENARIO

Scenario	Modifica nome	Cancella
Tutto Verde		
Tutto Rosso		
Bianco caldo		
Italia		
Pietra1		

RGBW PROJECTORS

STAFFATI



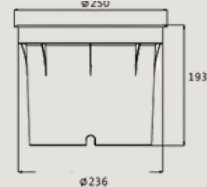
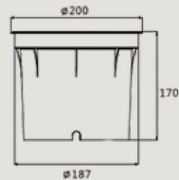
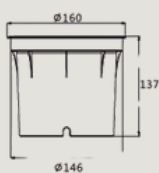
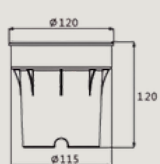
Codice	Potenza	Numero Led	CCT	Gradi	Dimensioni mm	Peso
RGBW 24	24W	8	RGBW	10°-15°-30°-45°-60°	167x179x39	1.3Kg
RGBW 36	36W	12	RGBW	10°-15°-30°-45°-60°	167x251x39	1.8Kg
RGBW 48	48W	18	RGBW	10°-15°-30°-45°-60°	239x251x39	2.4Kg
RGBW 60	60W	24	RGBW	10°-15°-30°-45°-60°	164x262x70	3.4Kg
RGBW 90	90W	36	RGBW	10°-15°-30°-45°-60°	234x262x70	4.6Kg
RGBW 120	120W	48	RGBW	10°-15°-30°-45°-60°	304x262x70	5.7Kg
RGBW 150	150W	60	RGBW	10°-15°-30°-45°-60°	374x262x70	7.2Kg
RGBW 180	180W	72	RGBW	10°-15°-30°-45°-60°	444x262x70	8.5Kg
RGBW 210	210W	84	RGBW	10°-15°-30°-45°-60°	514x262x70	10Kg

RGBW PROJECTORS

RECESSED

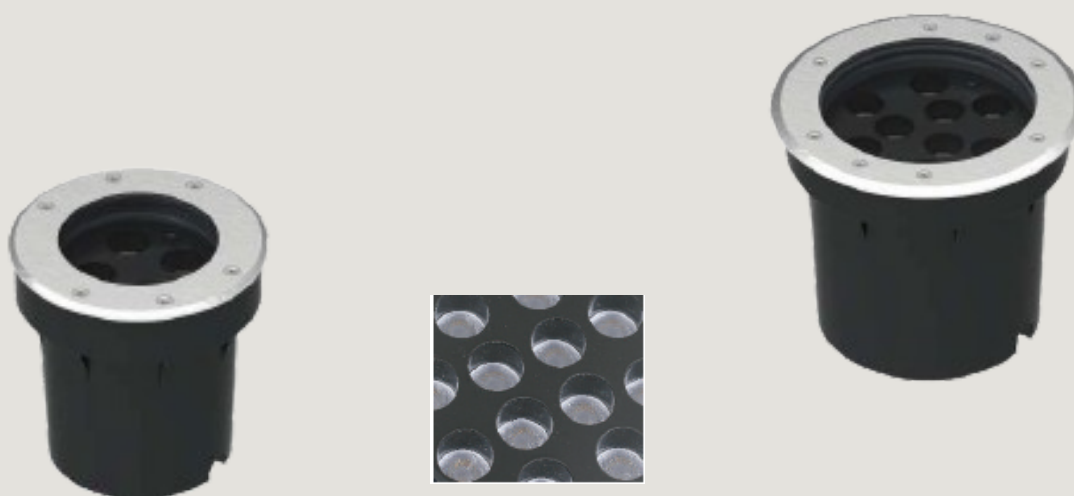


Codice	Potenza	Numero Led	CCT	Gradi	Dimensioni mm	Peso
INGROUND 12	12W	3	RGBW	15°-30°-45°-60°	120xø120	1.2Kg
INGROUND 24	24W	6	RGBW	15°-30°-45°-60°	137xø160	1.8Kg
INGROUND 48	48W	12	RGBW	15°-30°-45°-60°	170xø200	2.9Kg
INGROUND 72	72W	18	RGBW	15°-30°-45°-60°	194xø250	4.7Kg
INGROUND 96	96W	24	RGBW	15°-30°-45°-60°	194xø250	4.7Kg

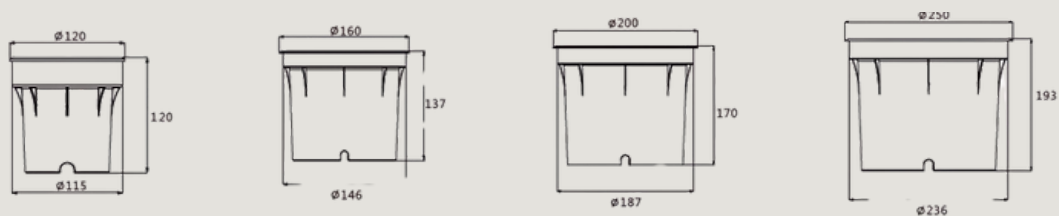


RGBW PROJECTORS

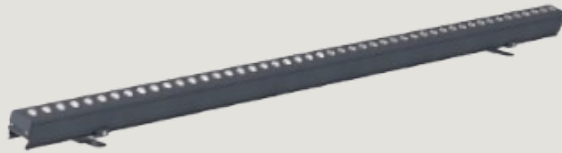
RECESSED



Codice	Potenza	Numero Led	CCT	Gradi	Dimensioni mm	Peso
INGROUND 16	16W	4	RGBW	10°-15°-30°-45°-60°	120xø120	1.2Kg
INGROUND 24	24W	6	RGBW	10°-15°-30°-45°-60°	137xø160	1.8Kg
INGROUND 48	48W	12	RGBW	10°-15°-30°-45°-60°	170xø200	2.9Kg
INGROUND 72	72W	18	RGBW	10°-15°-30°-45°-60°	194xø250	4.7Kg
INGROUND 96	96W	24	RGBW	10°-15°-30°-45°-60°	194xø250	4.7Kg



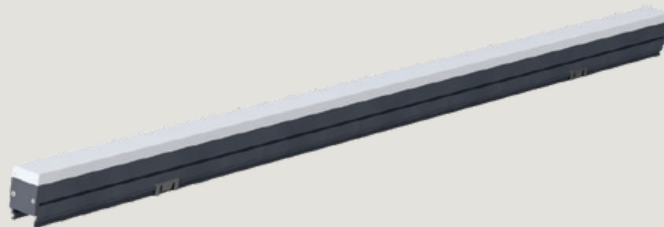
PROIETTORI LINEARI



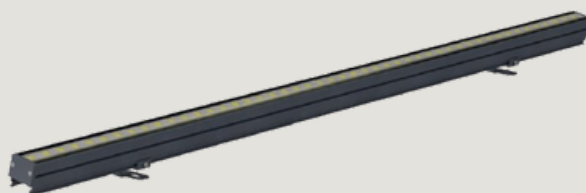
Codice	Potenza	Led	CCT	Dimensioni mm	Peso	Angolo
ET-XTD-H4801	12W	48	3000°K-4000°K	1000x28x33	1 Kg	30°/60°/90°
ET-XTD-H48S1	12W	48	RGBW	1000x28x33	1 Kg	30°/60°/90°
TL-XTD-H48F1	24W	48	RGBW	1000x28x33	1 Kg	30°/60°/90°



Codice	Potenza	Led	CCT	Dimensioni mm	Peso	Angolo
ET-XTD-H4802	12W	48	3000°K-4000°K	1000x28x35	1 Kg	20°/30°/45°
ET-XTD-H48S2	12W	48	RGBW	1000x28x35	1 Kg	20°/30°/45°
ET-XTD-H48F2	24W	48	RGBW	1000x28x35	1 Kg	20°/30°/45°

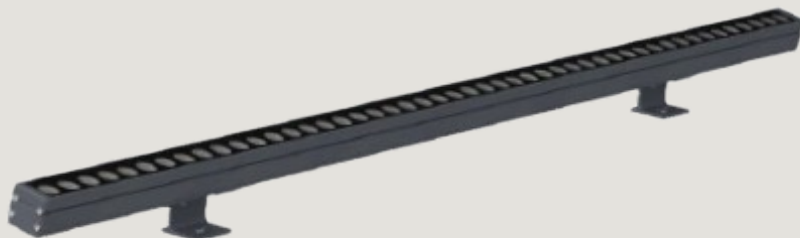


Codice	Potenza	Led	CCT	Dimensioni mm	Peso	Angolo
ET-XTD-I4800	12W	48	3000°K-4000°K	1000x28x46	1.5 Kg	100°
ET-XTD-I48S0	12W	48	RGB	1000x28x46	1.5 Kg	100°
ET-XTD-I48F0	24W	48	RGBW	1000x28x46	1.5 Kg	100°

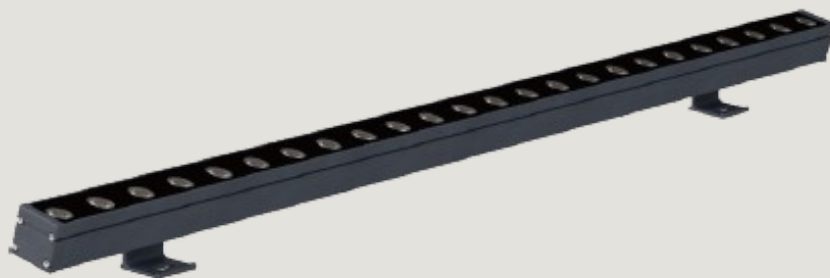


Codice	Potenza	Led	CCT	Dimensioni mm	Peso	Angolo
ET-XTD-J4800	12W	48	3000°K-4000°K	1000x28x33	1 Kg	110°
ET-XTD-I48S0	12W	48	RGB	1000x28x33	1 Kg	110°
ET-XTD-I48F0	24W	48	RGBW	1000x28x33	1 Kg	110°

PROIETTORI LINEARI

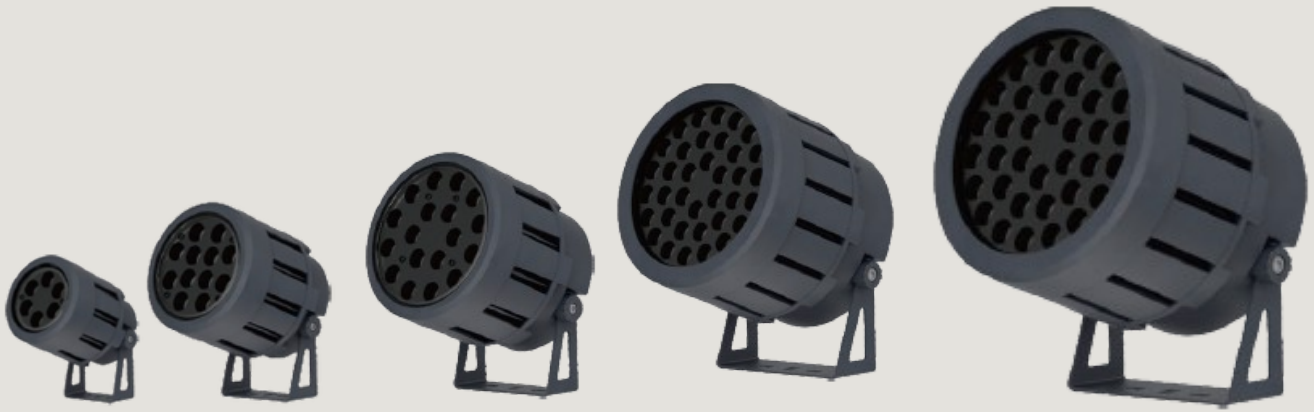


Codice	Potenza	Led	CCT	Dimensioni mm	Peso	Angolo
ET-XTD-K1801	18W	18	3000°K-4000°K	1000x30x66	1.1 Kg	10°-15°-30°-45°-60°
ET-XTD-K2401	24W	24	3000°K-4000°K	1000x30x66	1.1 Kg	10°-15°-30°-45°-60°
ET-XTD-K4800	12W	48	3000°K-4000°K	1000x30x66	1.1 Kg	10°-15°-30°-45°-60°
ET-XTD-K4800	24W	48	3000°K-4000°K	1000x30x66	1.1 Kg	10°-15°-30°-45°-60°
ETL-XTD-K48S0	12W	48	RGB	1000x30x66	1.1 Kg	10°-15°-30°-45°-60°
ET-XTD-K48F0	12W	48	RGBW	1000x30x66	1.1 Kg	10°-15°-30°-45°-60°



Codice	Potenza	Led	CCT	Dimensioni mm	Peso	Angolo
ET-XQD-I1801	18W	18	3000°K-4000°K	1000x36x68	1.5 Kg	10°-15°-30°-45°-60°
ET-XQD-I2401	24W	24	3000°K-4000°K	1000x36x68	1.5 Kg	10°-15°-30°-45°-60°
ET-XQD-I3601	36W	36	3000°K-4000°K	1000x36x68	1.5 Kg	10°-15°-30°-45°-60°
ET-XQD-I18S2	36W	18	RGB	1000x36x68	1.5 Kg	10°-15°-30°-45°-60°
ET-XQD-I18F2	36W	18	RGBW	1000x36x68	1.5 Kg	10°-15°-30°-45°-60°
ET-XQD-I24S2	48W	24	RGB	1000x36x68	1.5 Kg	10°-15°-30°-45°-60°
ET-XQD-I24F2	48W	24	RGBW	1000x36x68	1.5 Kg	10°-15°-30°-45°-60°

PROIETTORI



Codice	Potenza	Led	CCT	Dimensioni mm	Peso	Angolo
ET-TGD-I0603	18W	6	3000°K-4000°K	Ø120x205	1.5 Kg	6°-8°-10°-15°-30°-45°-60°
ET-TGD-I0604	24W	6	3000°K-4000°K	Ø120x205	1.5 Kg	6°-8°-10°-15°-30°-45°-60°
ET-TGD-I06S3	18W	6	RGB	Ø120x205	1.5 Kg	6°-8°-10°-15°-30°-45°-60°
ET-TGD-I06F4	24W	6	RGBW	Ø120x205	1.5 Kg	6°-8°-10°-15°-30°-45°-60°
ET-TGD-I1203	36W	12	3000°K-4000°K	Ø120x215	2.1 Kg	6°-8°-10°-15°-30°-45°-60°
ET-TGD-I12S3	36W	12	RGB	Ø120x215	2.1 Kg	6°-8°-10°-15°-30°-45°-60°
ET-TGD-I12F4	48W	12	RGBW	Ø120x215	2.1 Kg	6°-8°-10°-15°-30°-45°-60°
ET-TGD-I1803	54W	18	3000°K-4000°K	Ø190x260	3.8 Kg	6°-8°-10°-15°-30°-45°-60°
ET-TGD-I18S3	54W	18	RGB	Ø190x260	3.8 Kg	6°-8°-10°-15°-30°-45°-60°
ET-TGD-I18F4	72W	18	RGBW	Ø190x260	3.8 Kg	6°-8°-10°-15°-30°-45°-60°
ET-TGD-I3603	108W	36	3000°K-4000°K	Ø230x325	6.5 Kg	6°-8°-10°-15°-30°-45°-60°
ET-TGD-I36S3	108W	36	RGB	Ø230x325	6.5 Kg	6°-8°-10°-15°-30°-45°-60°
ET-TGD-I36F4	144W	36	RGBW	Ø230x325	6.5 Kg	6°-8°-10°-15°-30°-45°-60°
ET-TGD-I7203	216W	72	3000°K-4000°K	Ø325x375	9.5 Kg	6°-8°-10°-15°-30°-45°-60°
ET-TGD-I72S3	216W	72	RGB	Ø325x375	9.5 Kg	6°-8°-10°-15°-30°-45°-60°
ET-TGD-I72F4	216W	72	RGBW	Ø325x375	9.5 Kg	6°-8°-10°-15°-30°-45°-60°

PROIETTORI



Codice	Potenza	Led	CCT	Dimensioni mm	Peso	Angolo
ET-TGD-I0110	10W	1	3000°K-4000°K	Ø120x205	1.5 Kg	6°-8°-10°-15°-30°-45°-60°
ET-TGD-I0120	20W	1	3000°K-4000°K	Ø120x205	1.5 Kg	6°-8°-10°-15°-30°-45°-60°
ET-TGD-I0315	30W	3	3000°K-4000°K	Ø150x215	2.1 Kg	6°-8°-10°-15°-30°-45°-60°
ET-TGD-I0318	36W	3	3000°K-4000°K	Ø150x215	2.1 Kg	6°-8°-10°-15°-30°-45°-60°
ET-TGD-I0412	50W	4	3000°K-4000°K	Ø190x260	3.8 Kg	6°-8°-10°-15°-30°-45°-60°
ET-TGD-I0612	75W	6	3000°K-4000°K	Ø230x325	6.5 Kg	6°-8°-10°-15°-30°-45°-60°
ET-TGD-I0616	100W	6	3000°K-4000°K	Ø230x325	6.5 Kg	6°-8°-10°-15°-30°-45°-60°
ET-TGD-I1212	150W	12	3000°K-4000°K	Ø325x375	9.5 Kg	6°-8°-10°-15°-30°-45°-60°
ET-TGD-I1216	200W	12	3000°K-4000°K	Ø325x375	9.5 Kg	6°-8°-10°-15°-30°-45°-60°

PHOTOVOLTAIC LED STREET LIGHT

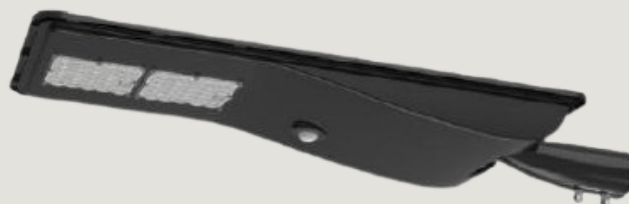
The Solar All in One is the photovoltaic armature, which thanks to the twilight function guarantees less energy waste.

The lighting body is in die-cast aluminum, painted with epoxy powders.

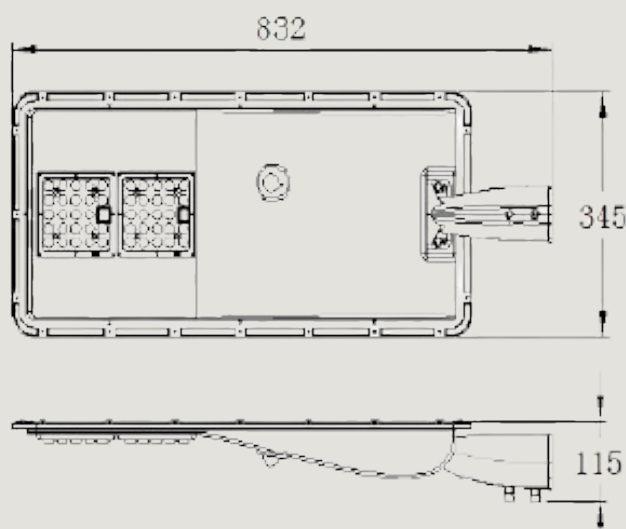
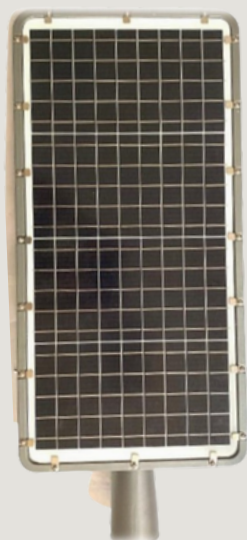
Characteristics:

- CREE XP-G3 S4 Led optical group > 164lm/W;
- Angle: $-15^{\circ}/+15^{\circ} \sim 90^{\circ}$;
- Quality marks: All housed components comply with CE ENEC regulations;
- Maximum solar panel power: 75W (high-efficiency polycrystalline silicon solar cells);
- Solar panel lifespan: >25 years;
- Battery type: EVE/CATL/CALB LIFEP04 Prismatic 32Ah – 3.2V or similar.
Configuration: 4S1P - 12.8V 32A – 409W;
- Battery life: >10 years (3500 charge and discharge cycles);
- MPPT charge controller;
- PIR/RADAR proximity sensor with spherical range up to 7 m;
- Mounting: By bracket, recessed;
- Discharge duration at full efficiency only in the presence of traffic: ≥ 20 h;
- Energy-saving discharge duration: ≥ 24 h;
- Operating temperature: $-10^{\circ}\text{C} +60^{\circ}\text{C}$;
- Recommended installation height: 6-7 m;
- Recommended installation distance between poles: 20m/ 25m.

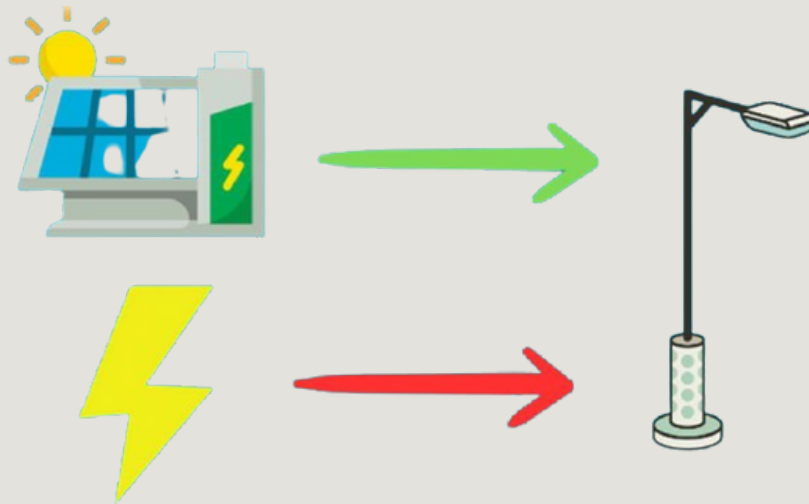
PHOTOVOLTAIC LED STREET LIGHT



Codice	Potenza	Flusso Luminoso	CCT	Dimensioni mm	Peso
Solar All in One 40	40W	5700 lm	2200°K-3000°K-4000°K-5700°K	832*345*115	8 Kg
Solar All in One 60	60W	8736 lm	2200°K-3000°K-4000°K-5700°K	832*345*115	8 Kg
Solar All in One 80	80W	12540 lm	2200°K-3000°K-4000°K-5700°K	832*345*115	8 Kg



PHOTOVOLTAIC LED STREET LIGHT HYBRID

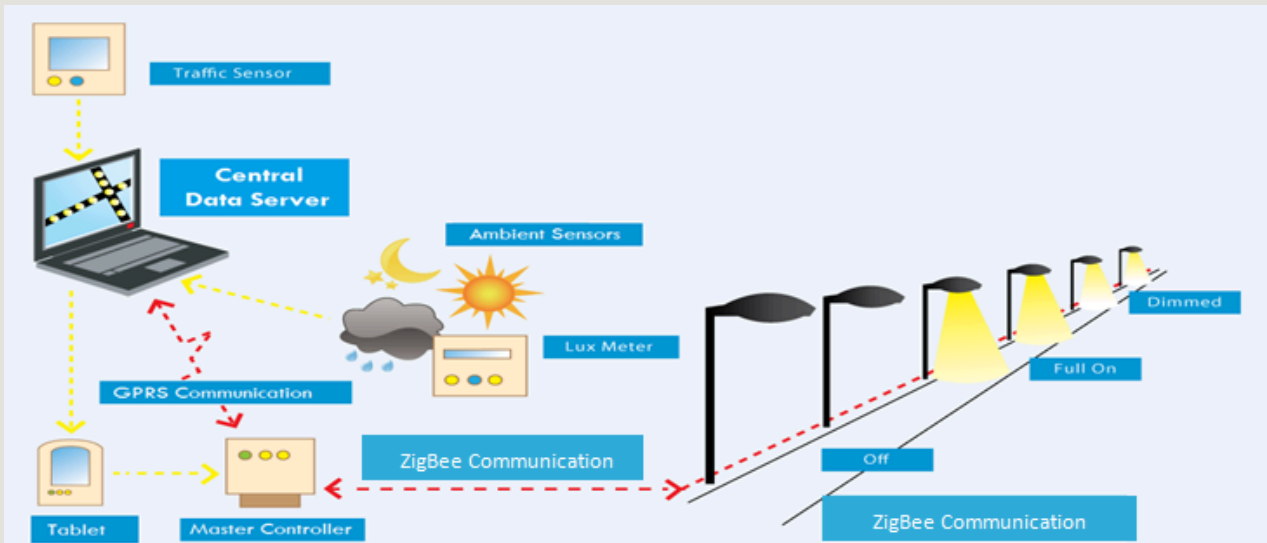


Solar All in One HYBRID Armor; Technologically advanced lighting fixture capable of drawing from the electrical network only in low battery conditions; this system is reliable and green!

Characteristics:

- CREE XP-G3 S4 Led optical group > 164lm/W Angolo: $-15^{\circ}/+15^{\circ} \sim 90^{\circ}$;
- Quality marks: All housed components comply with CE ENEC regulations;
- Maximum solar panel power: 75W (high-efficiency polycrystalline silicon solar cells);
- Solar panel lifespan: >25 years;
- Battery type: EVE/CATL/CALB LIFEP04 Prismatic 32Ah – 3.2V or similar. Configuration: 4S1P - 12.8V 32A – 409W;
- Battery life: >10 years (3500 charge and discharge cycles);
- MPPT charge controller;
- PIR/RADAR proximity sensor with spherical range up to 7 m;
- Mounting: By bracket, recessed;
- Discharge duration at full efficiency only in the presence of traffic: ≥ 20 h;
- Energy-saving discharge duration: ≥ 24 h;
- Operating temperature: $-10^{\circ}\text{C} +60^{\circ}\text{C}$;
- Recommended installation height: 6-7 m;
- Recommended installation distance between poles: 20m/ 25m;
- Electrical accessories: Dimmable electronic power supply in class II, IP67/IP40, TopBrand;
- Input: 12V-24V (Max power 60W);
- Electrical accessories: AC-DC / DC-DC Converter dimmable in class II.

POINT-TO-POINT AND PANEL REMOTE CONTROL



Telemetria Bompietro

Nascondi Indice

Gestione Account Configurazione Log-Out

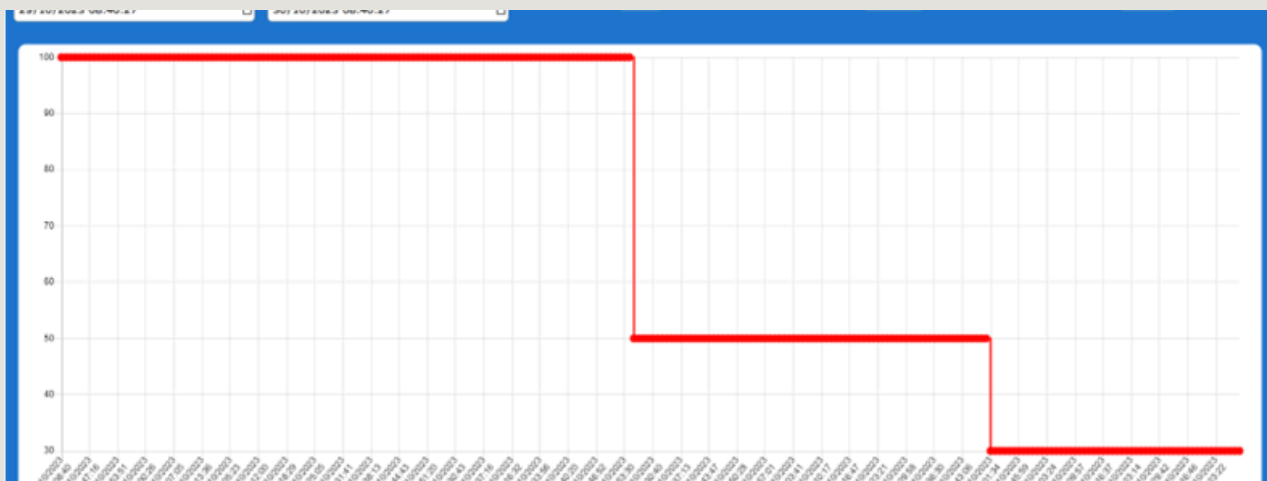
Electronica Tirrito - Telemetry System

Mostra 5 righe Ricerca: Ricerca...

STATO	CONCENTRATORE	QUADRO	LAMPS	CONSUMI(W)	QRCODE
<input type="checkbox"/>	C2	Q2	0 / 28	0.00	
<input type="checkbox"/>	C3	Q3	0 / 49	0.00	
<input type="checkbox"/>	C4	Q4	0 / 11	0.00	
<input type="checkbox"/>	C5	Q5	0 / 62	0.00	
<input type="checkbox"/>	C6	Q6	0 / 66	0.00	

Pagina 1 di 2

Indietro Avanti



POINT-TO-POINT AND PANEL REMOTE CONTROL

Electronica Tirrito - Telemetry System

DA GIORNO: 30/10/2023 A GIORNO: gg/mm/aaaa

NEI GIORNI: ALL Dom
 Lun Mar Mer
 Gio Ven Sab

VALORE: Dim00

CREA

PROGRAMMAZIONI ATTIVE

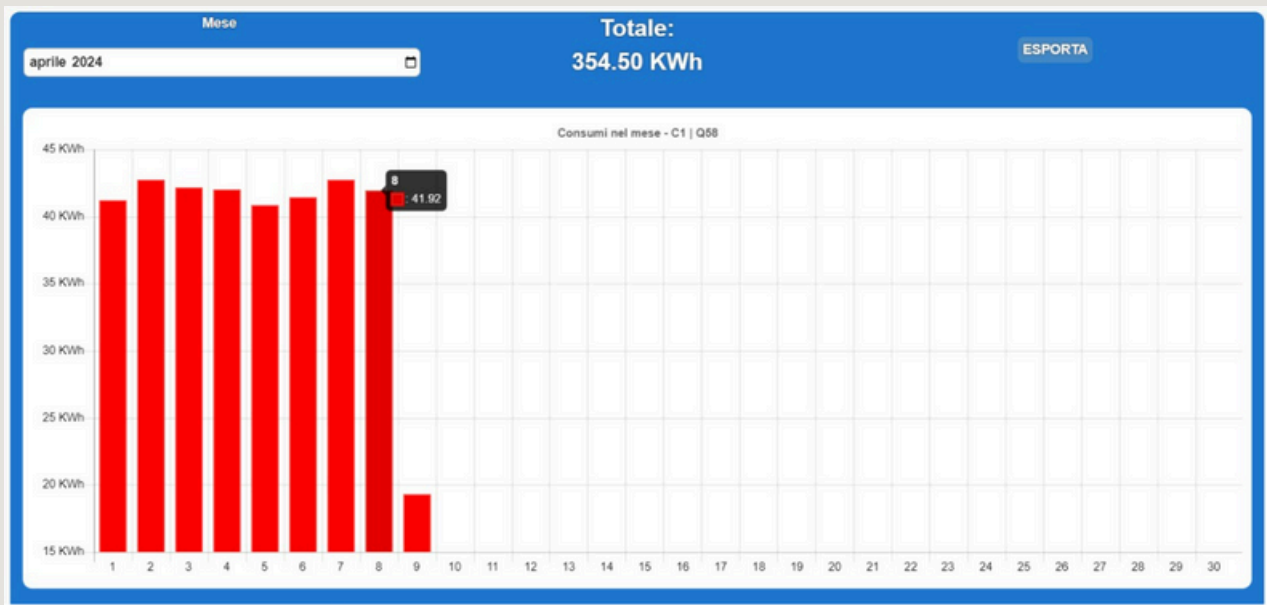
2023-06-12

DOM LUN MAR MER GIO VEN SAB

INV1

MODIFICA CANCELLA

DALLE ORE	ALLE ORE	VALORE	DEFAULT VAL	DISPOSITIVI
00:59	02:59	50	100	ELIMINA
03:00	07:00	30	100	ELIMINA



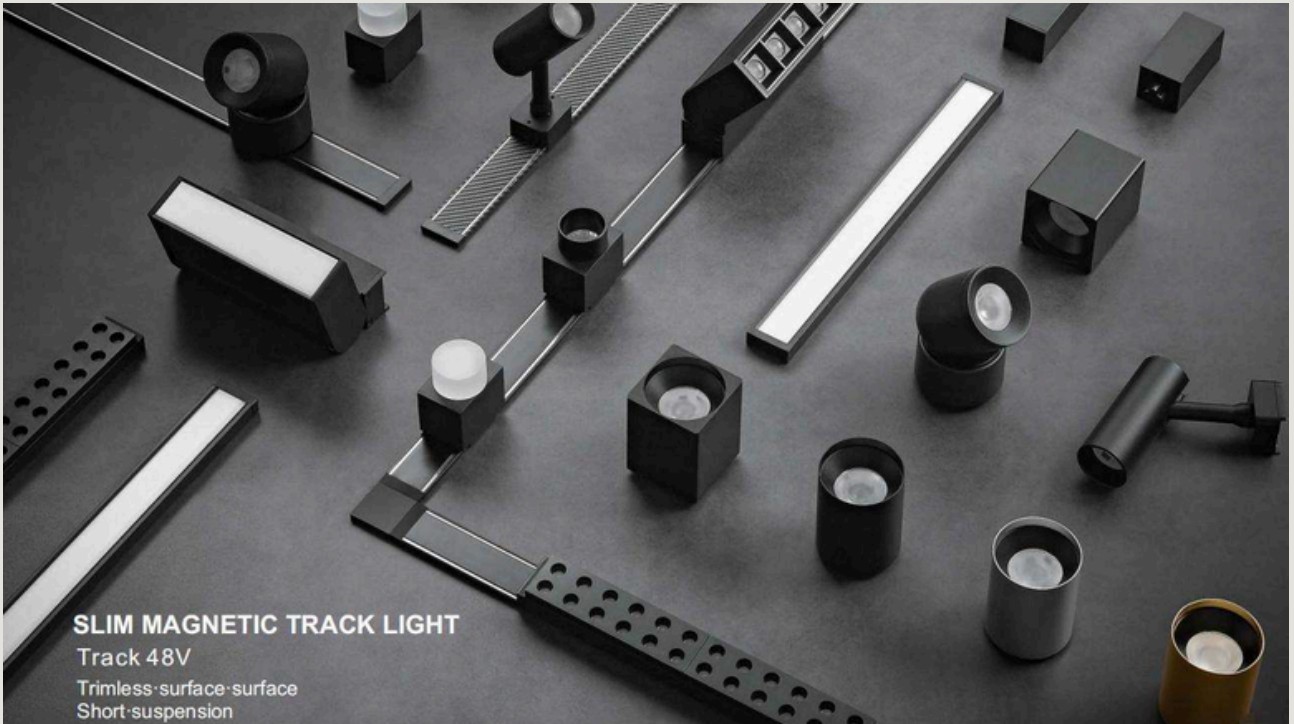
Mappa

Forma/Immagine	Colore	Tipologia
<input checked="" type="checkbox"/>		Olive 6080 24LED 80W 2200K
<input checked="" type="checkbox"/>		Olive 6080 24LED 80W 2400K
<input checked="" type="checkbox"/>		Olive 6080 24LED 80W 2700K
<input checked="" type="checkbox"/>		Olive 6080 24LED 80W 4000K
<input checked="" type="checkbox"/>		Raf40 Curvo 4000K
<input checked="" type="checkbox"/>		Raf40W Coppa 2400K
<input checked="" type="checkbox"/>		Raf40W Coppa 2700K
<input checked="" type="checkbox"/>		Raf40W LanternaQ 2200K
<input checked="" type="checkbox"/>		Raf40W Geocila 2200K
<input checked="" type="checkbox"/>		Raf40W Geocila 2400K
<input checked="" type="checkbox"/>		Raf40W Geocila 2700K
<input checked="" type="checkbox"/>		Raf40W Lantema Est 2200K
<input checked="" type="checkbox"/>		SIRIG 12LED 40W 2700K
<input checked="" type="checkbox"/>		SIRIG 12LED 40W 4000K
<input checked="" type="checkbox"/>		SIRIG 24LED 80W 2400K

Mappa

RETAIL

MAGNETIC TRACKS



ULTRATHIN MAGNET LIGHT SYSTEM
Built-in power supply

Double magnet
No snap design
freedom of movement

Fits the track perfectly

Power supply and lighting integration

Move As You Wish

Adjust the position to illuminate every space

Can be passed

48V safe voltage no risk to touch

Vertical right Angle splicer
The ceiling can be seamlessly joined with the wall

Straight line splicer
Make the track horizontal and seamless

MS30	MS30-SP200(Power supply)	LT Cross module body pin
MS30L type module	MS30T type module	MS30 cross module
MS30 pass through module	MS30 90° module	LT Cross module body

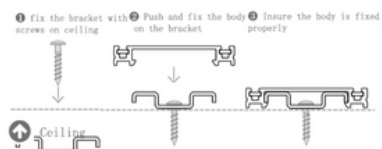
RETAIL

MAGNETIC TRACKS



Brief Introduction

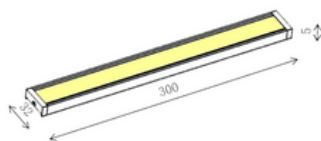
- Thickness:5mm,apply a magnet system without suspended ceiling;
- Can be cut at any length,satisfy various design;
- Easy installation,bracket and body lock model;
- PC body with smoothly move,good insulation;



Diffused Model

Basic Light

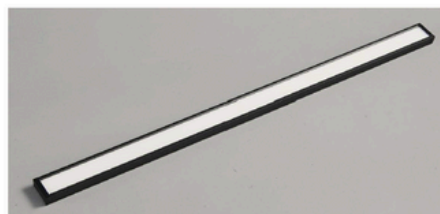
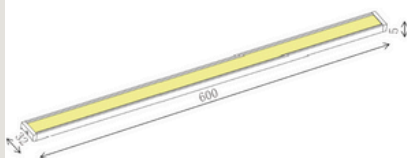
- Model No.: TP-MS30-DF300
- Color: White Black
- Input Voltage: DC48V
- Wattage: 12W
- Beam Angle: 105°
- CCT: 3000K 4000K 5000K
- Ra: >90
- Dimension: 300*32*11mm



Diffused Model

Basic Light

- Model No.: TP-MS30-DF600
- Color: White Black
- Input Voltage: DC48V
- Wattage: 24W
- Beam Angle: 105°
- CCT: 3000K 4000K 5000K
- Ra: >90
- Dimension: 600*32*11mm



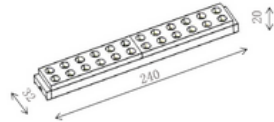
RETAIL

MAGNETIC TRACKS

Grille Model

Anti-glare Focus light

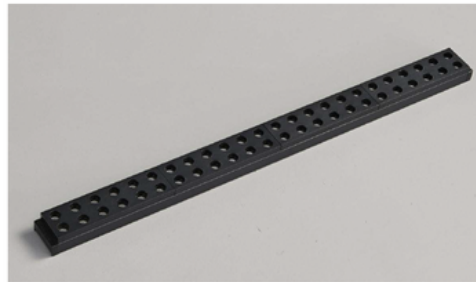
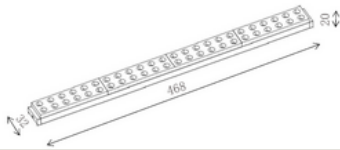
- Model No.: TP-MS30-LB24
- Color: White Black
- Input Voltage: 48V
- Wattage: 10W
- Beam Angle: 30°
- CCT: 3000K 4000K 5000K
- Ra: >90
- Dimension: 240*32*20mm



Grille Model

Anti-glare Focus light

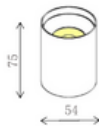
- Model No.: TP-MS30-LB48
- Color: White Black
- Input Voltage: 48V
- Wattage: 20W
- Beam Angle: 30°
- CCT: 3000K 4000K 5000K
- Ra: >90
- Dimension: 468*32*20mm



Round Downlight

Anti-glare Focus light

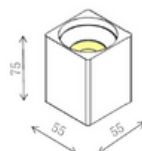
- Model No.: TP-MS30-DR54
- Color: White Black
- Input Voltage: 48V
- Wattage: 8W
- Beam Angle: 24°
- CCT: 3000K 4000K 5000K
- Ra: >90
- Dimension: ϕ 54*75mm



Square Downlight

Anti-glare Focus light

- Model No.: TP-MS30-DS54
- Color: White Black
- Input Voltage: 48V
- Wattage: 8W
- Beam Angle: 24°
- CCT: 3000K 4000K 5000K
- Ra: >90
- Dimension: 55*55*75mm



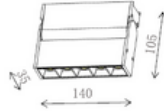
RETAIL

MAGNETIC TRACKS

Folded Grille light

Anti-glare Focus light

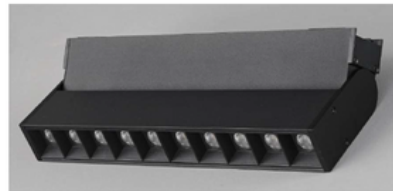
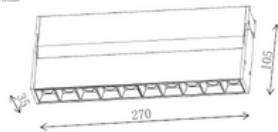
- Model No.: TP-MS30-FD5
- Color: White Black
- Input Voltage: 48V
- Wattage: 10W
- Beam Angle: 30°
- CCT: 3000K 4000K 5000K
- Ra: >90
- Dimension: 140*35*105mm



Folded Grille light

Anti-glare Focus light

- Model No.: TP-MS30-FD10
- Color: White Black
- Input Voltage: 48V
- Wattage: 20W
- Beam Angle: 30°
- CCT: 3000K 4000K 5000K
- Ra: >90
- Dimension: 270*35*105mm



Folded Grille light

Rotable Diffused light

- Model No.: TP-MS30-FD10D
- Color: White Black
- Input Voltage: 48V
- Wattage: 12W
- Beam Angle: 105°
- CCT: 3000K 4000K 5000K
- Ra: >90
- Dimension: 270*30*105mm



Track light

Anti-glare Focus light

- | | |
|---------------------------|----------------------------|
| •Model No.: TP-MS30-TL7 | •Model No.: TP-MS30-TL12 |
| •Color: White Black | •Color: White Black |
| •Input Voltage: 48V | •Input Voltage: 48V |
| •Wattage: 7W | •Wattage: 12W |
| •Beam Angle: 24° | •Beam Angle: 24° |
| •CCT: 3000K 4000K 5000K | •CCT: 3000K 4000K 5000K |
| •Ra: >90 | •Ra: >90 |
| •Dimension: ø 36*90*145mm | •Dimension: ø 48*150*205mm |



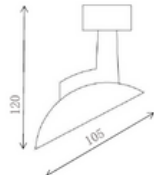
RETAIL

MAGNETIC TRACKS

Track light-Shell

Anti-glare Focus light

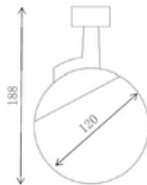
- Model No.: TP-MS30-TS7
- Color: White Black
- Input Voltage: 48V
- Wattage: 7W
- Beam Angle: 24°
- CCT: 3000K 4000K 5000K
- Ra: >90
- Dimension: ϕ 105*120mm



Track light-Pearl

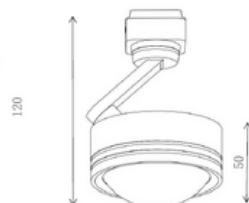
Decorated light

- Model No.: TP-MS30-TP7
- Color: White Black
- Input Voltage: 48V
- Wattage: 7W
- Beam Angle: 270°
- CCT: 3000K 4000K 5000K
- Ra: >90
- Dimension: ϕ 120*180mm



Track light-Moon Stone

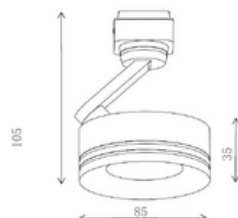
- Model No.: TP-MS30-TM7
- Color: White Black
- Input Voltage: 48V
- Wattage: 7W
- Beam Angle: 100°
- CCT: 3000K 4000K
- Ra: >90
- Dimension: ϕ 85*50*120mm



Track light-Moon Stone/L

Anti-glare Focus light

- Model No.: TP-MS30-TML7
- Color: White Black
- Input Voltage: 48V
- Wattage: 7W
- Beam Angle: 24°
- CCT: 3000K 4000K 5000K
- Ra: >90
- Dimension: ϕ 85*35*105mm



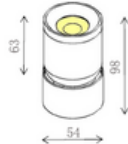
RETAIL

MAGNETIC TRACKS

Rotatable Round Spotlight

Anti-glare Focus light

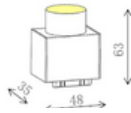
- Model No. : TP-MS30-DR54R
- Color: White Black
- Input Voltage: 48V
- Wattage: 7W
- Beam Angle: 24°
- CCT: 3000K 4000K 5000K
- Ra: >90
- Dimension: \varnothing 54*63*98mm



Elfin Spotlight

Anti-glare Focus light

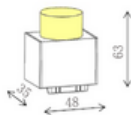
- Model No. : TP-MS30-SP1
- Color: White Black
- Input Voltage: 48V
- Wattage: 6W
- Beam Angle: 30°
- CCT: 3000K 4000K 5000K
- Ra: >90
- Dimension: 48*35*60mm



Elfin Arc light

Decorated light

- Model No. : TP-MS30-SA1
- Color: White Black
- Input Voltage: 48V
- Wattage: 4W
- Beam Angle: 160°
- CCT: 3000K 4000K 5000K
- Ra: >90
- Dimension: 48*35*60mm



FLEXIBLE TUBE MODULE

- Model No. : TP-MS30-FT500 : TP-MS30-FT1000 : TP-MS30-FT1500
- Color: White Black
- Input Voltage: 48V
- Wattage: ① 8W ② 16W ③ 24W
- Beam Angle: 360°
- CCT: 3000K 4000K 6000K
- Ra: >80
- Dimension: ① \varnothing 22*500mm
② \varnothing 22*1000mm
③ \varnothing 22*1500mm

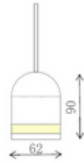


RETAIL

MAGNETIC TRACKS

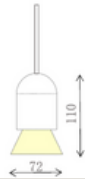
HANGING LIGHT MODULE

- Model No.: TP-MS30-HS7W
- Color: White Black
- Input Voltage: 48V
- Wattage: 7W
- Beam Angle: 160°
- CCT: 3000K 4000K 5000K
- Ra: >90
- Dimension: ϕ 62*90mm



HANGING LIGHT MODULE

- Model No.: TP-MS30-HC7W
- Color: White Black
- Input Voltage: 48V
- Wattage: 7W
- Beam Angle: 160°
- CCT: 3000K 4000K 5000K
- Ra: >90
- Dimension: ϕ 72*110mm



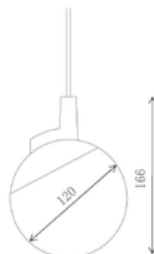
HANGING LIGHT MODULE

- Model No.: TP-MS30-HZ7W
- Color: White Black
- Input Voltage: 48V
- Wattage: 7W
- Beam Angle: 24°
- CCT: 3000K 4000K 5000K
- Ra: >90
- Dimension: ϕ 90*78mm



HANGING LIGHT MODULE

- Model No.: TP-MS30-HR7W
- Color: White Black
- Input Voltage: 48V
- Wattage: 7W
- Beam Angle: 270°
- CCT: 3000K 4000K 5000K
- Ra: >90
- Dimension: ϕ 120*166mm



LED WALL

LED Walls are full-color LED billboards for indoor and outdoor environments. They are ideal for attracting the attention of passers-by and sending them a clear and immediate message.

Characteristics:

- Pixel Pitch: 5mm P5 / 4mm P4 / 3.076 mm P3 / 2mm P2 / 1.25 P1.25
- Panel Size: 320mm*160mm
- Panel Resolution: P5-64x32 pixels/
P4-80x40 pixels / P3.076- 104x52pixel
- Pixel Density > 40,000 dots/m²
- LED type: SMD2727
- Pixel configuration: 1R1G1B
- Grayscale: 16 bit per color
- Color capacity: 16,777,216
- Color temperature: 3,500 ~ 9,500 K
- Horizontal/vertical viewing angle: 140°
- Drive method: 1/8 scan Brightness: \geq 6,500 cd/m²
- Frequency: 50 ~ 60 Hz
- Refresh rate: \geq 1,800 Hz
- Protection class: IP65
- Storage temperature: -40°+ 65°
- Operating temperature: -30°+ 55°
- Operating humidity: 10% - 95% RH
- Defect rate: \leq 0.00001
- MTBF: \geq 10,000 hours
- Expected life: \geq 100,000 hours
- Panel: customized
- Panel weight: 12 Kg/ sqm (without case)
- Panel color: black/gray
- Operating voltage: AC110V/220V \pm 10%
- Power consumption: The maximum power consumption is 980W/m²c
(50W/module)
- Average power consumption: 323W~411W/m² (16.6W~21W/module)
- Leakage current: \leq 20mA(single LED)
- Power on: Auto power on
- Control system: Electronic control board

Operating system: WinXP, Win2000, Vista, Win7 / Win8 / Win10 etc.





INFORMATION TOTEMS

&

TOUCH TABLE

The information totems are able to provide useful and updated information to both citizens and tourists. The digital information totem presents itself as an innovative and valuable tool.

Digital information totems allow users to interact with information. Thanks to touch screens, citizens and tourists can navigate through the available options, search for specific information and access interactive maps, all in self-service mode. In addition to text, totems can provide multimedia content such as images, videos and audio, enriching the information experience and making the information more engaging and understandable.

Thanks to Internet connectivity, totems can provide constantly updated information regarding events, local news, weather conditions and other useful information.

In tourist locations, multilingual information is essential to welcome visitors from all over the world. Digital information totems can offer content in multiple languages to ensure maximum accessibility.

Characteristics:

TOTEM_ET_V55 NO TOUCH

- 55" 16:9 vertical Ultra HD (4K) 3840x2160 pixel monitor;
- Integrated control PC 4Gb Ram, 120Gb HD SSD with Wireless Module and Microsoft Windows 10 Operating System License;
- Cover: 4mm protective glass (optional) or transparent Plexiglass;
- Cooling system (with forced ventilation) managed by thermostat;
- Self-supporting structure in steel painted with epoxy powders.

TOTEM_ET_V55 TOUCH SCREEN

- 55" 16:9 vertical Ultra HD (4K) 3840x2160 pixel monitor;
- Integrated control PC 4Gb Ram, 120Gb HD SSD with Wireless Module and Microsoft Windows 10 Operating System License;
- Multitouch or capacitive IR frame;
- Cover: 4mm protective glass (optional) or transparent Plexiglass;
- Cooling system (with forced ventilation) managed by thermostat;
- Self-supporting structure in epoxy powder coated steel.

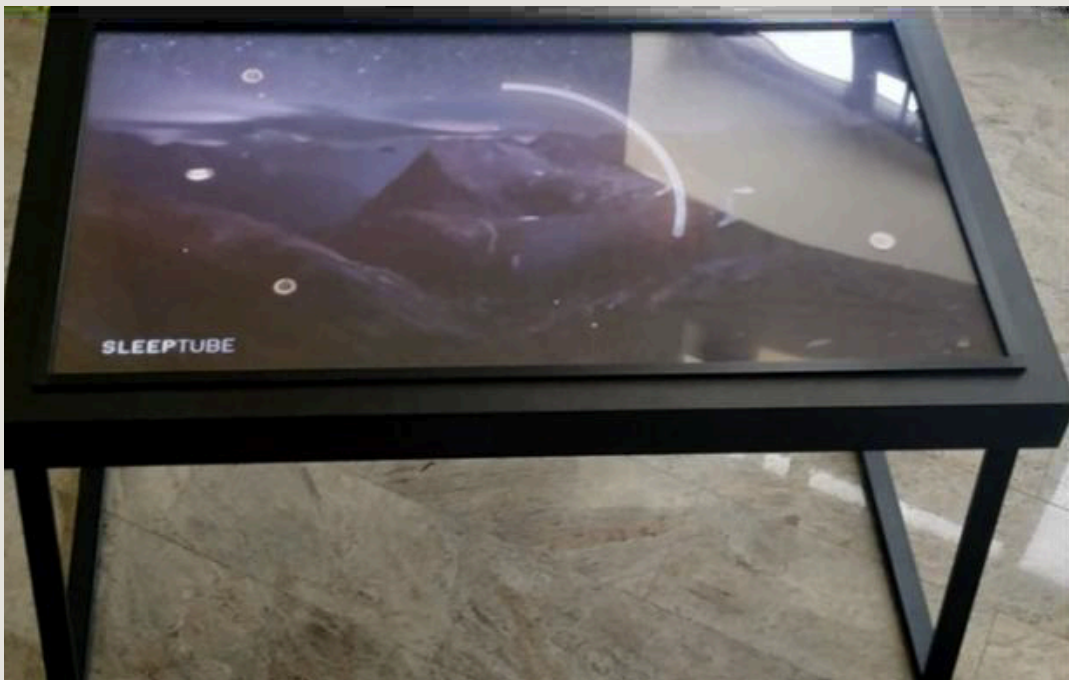


TOTEMS INFORMATION





TOUCH SCREEN TABLE



BACS

Building Automation and Control Systems (BACS) are products that automatically monitor and regulate energy using technologies in our homes and buildings to create a comfortable environment while optimizing energy use.

In fact, a BACS system can be initially created with minimal functions and then new ones can be added.

Electronica Tirrito produces a BACS IoT system with proprietary boards capable of offering benefits and facilities to the user, such as supervision and remote management of electrical loads, lighting, energy management, climate, access control, video intercom, wireless controls, water resource management, irrigation, tank, etc...



HOW BACS WORKS

BACS systems are made up of two fundamental elements:

Sensors that allow you to acquire environmental data and transmit them to artificial intelligence.

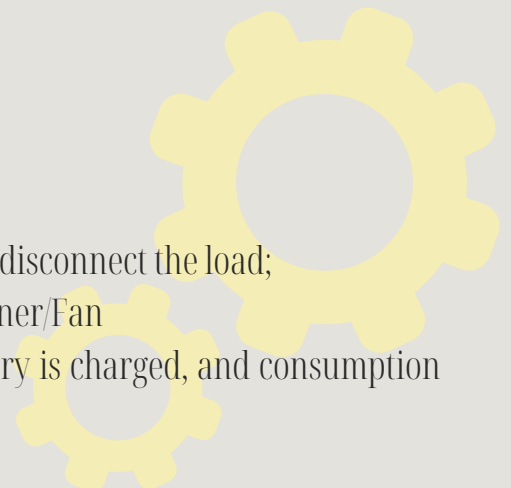
Such as temperature sensors, brightness sensors, gas leak sensors, smoke, flooding, level sensor, etc.



Actuators are those devices that come into play when the user or the automations perform actions.

AUTOMATION EXAMPLES

- If the tank level is below 30% STOP irrigation;
- If the flood sensor is active, close the solenoid valve;
- If the Power sensor detects that 95% has been exceeded, disconnect the load;
- If the temperature rises above 30°C, turn on the conditioner/Fan
- If the production from Photovoltaic is present, the battery is charged, and consumption is below the threshold, turn on special loads.



SCENARIOS

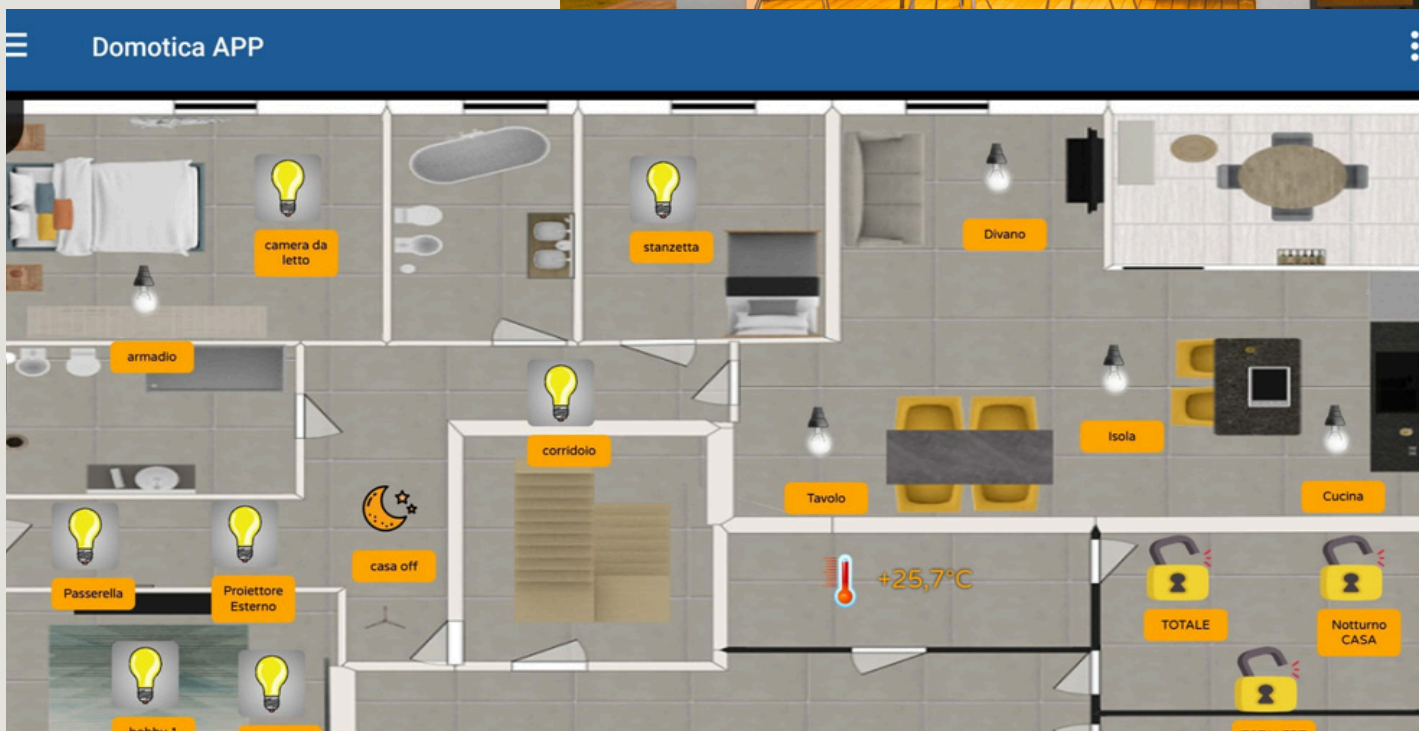
Scenarios consist of a set of tasks to be performed when the user requests them.



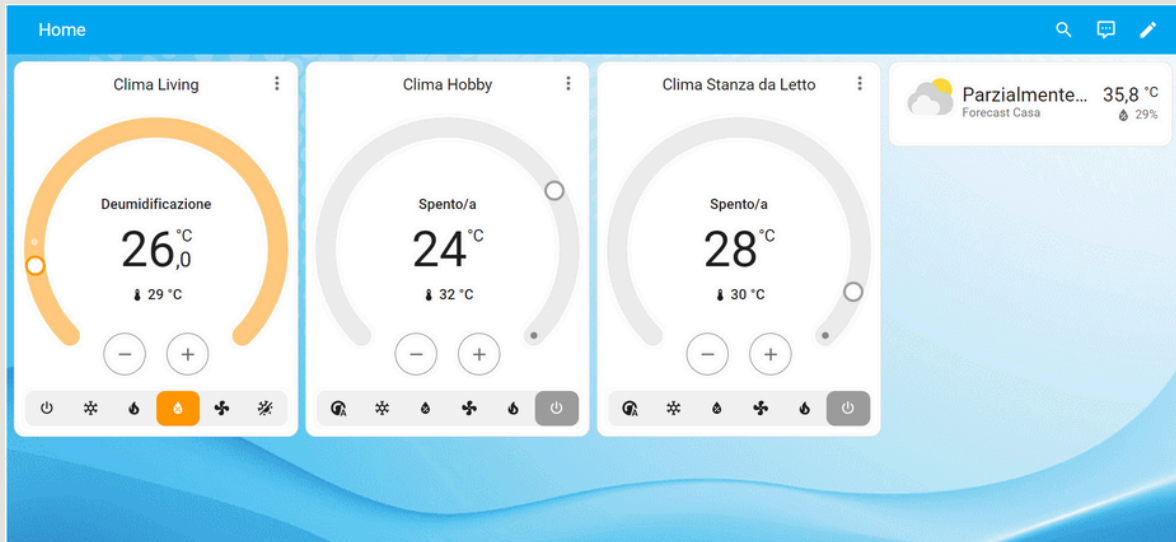
- "Exit Home" scenario in this case you could turn off the lights, lower the shutters, set the Total alarm.

- "Night" scenario in this case you could turn off the lights, lower the bedroom shutters, insert the Perimeter alarm.

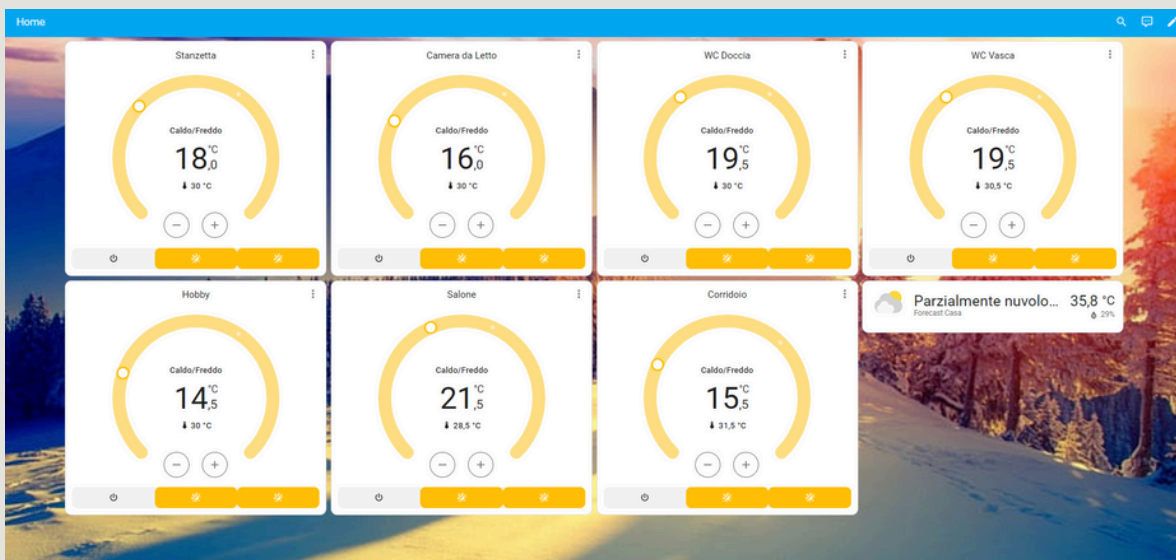
- "Party" scenario in this case you could turn on the living room lights, the outside lights and start the garden fountain.



HVAC MANAGEMENT COOLING/HEATING SYSTEM



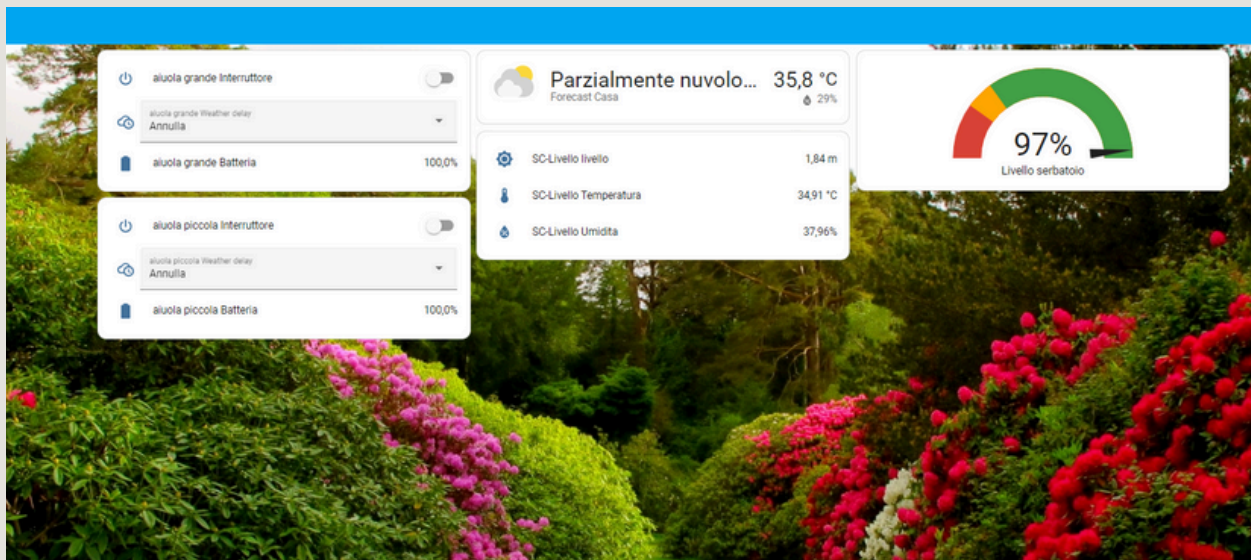
HEATING SYSTEM MANAGEMENT



RESOURCE OUTPUT MANAGEMENT



IRRIGATION SYSTEM AND WATER RESERVE MANAGEMENT



MANAGEMENT OF ANTI-INTRUSION ANTI-FIRE FLOODING SYSTEM



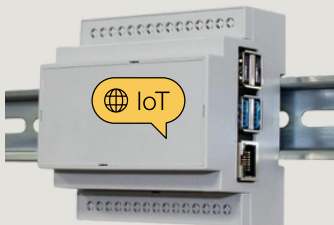
N configurabile zones;

16 Inputs;

8 Outputs;

Activation/Deactivation via RFID/ SmartPhone/
Keypad;

RealTime notifications via Telegram/ email SMS
Calls.



CONTROL SYSTEM

Smoke Sensor;

Flood Sensor;

CO2 Sensor;

Volumetric Sensor;

Fixture Contacts;

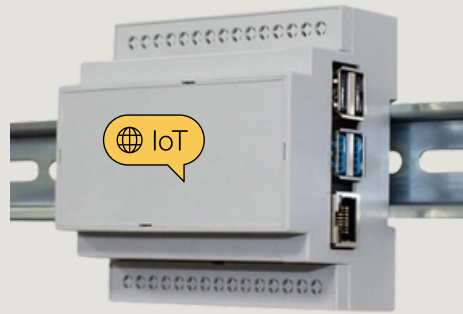
Piezo Electric Sensor


Real Time Notifications via
Telegram/ Email SMS Calls



Central Host



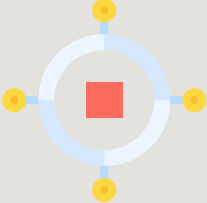


ET - CH



	<p>Quad core Cortex-A72 8GB LPDDR4-3200 SDRAM AC/DC Power Supply 5V 3A Operating Temp: 0 - 50°C</p>
	<p>Connectivity: WiFi/LAN RJ45/ZigBee/ModBus MQTT</p>
	<p>Ability to manage up to 100 Slaves of different types through Wireless or Wired mesh networks.</p>
	<p>Degree of protection: . Index of protection of the terminals against direct contact: IP2X (IEC/EN 60529) . Index of protection of the front face against direct contact: IP3XD (IEC/EN 60529) . Class II driver, front panel with bezel.</p>
	<p>Environmentally friendly - Compliance with European Union directives: . Compliance with Directive 2002/95/EC of 01/27/03 known as "RoHS" which provides for a restriction of the use of hazardous substances such as lead, mercury, cadmium, hexavalent chromium and polybrominated biphenyl (PBB) and polybrominated diphenyl ether (PBDE) brominated flame retardants from 1 July 2006 . Compliance with Directive 91/338/EEC of 06/18/91 and Decree 94-647 of 07/27/04 Compliance with electromagnetic interference (EMC): . Complies with standard EN 301 489-1: Immunity to electrical transients in explosions Immunity to shock waves (2KV) Plastic material: . Halogen-free plastics. . Marking of parts according to ISO 11469 and ISO 1043. . ISO 7000:2004, Graphical symbols for use on equipment -</p>

ESP_HA_168



	<ul style="list-style-type: none">• Node MCU on 9-module DIN box• 16 digital Input• 8 Relay outputs 8A• 1 analog input (3.2V max input)• AC/DC power supply 12V
	Connectivity: WiFi MQTT
	Integrable Sensors/Devices: Modbus RS485 RTU Node Network/Climate Analyzer; CO2 Sensor (I2C/SPI/Analog), Temp & Humidity Sensor, Light Sensor (SPI/I2C), Volumetric Sensor, Ultrasonic Sensor, Exp Board IO (16Input/8 Output), Dali/Dali2 Node, Pulse Sensor for l/m readings.
	Degree of protection: . Index of protection of the terminals against direct contact: IP2X (IEC/EN 60529) . Index of protection of the front face against direct contact: IP3XD (IEC/EN 60529) . Class II driver, front panel with bezel.
	Environmentally friendly - Compliance with European Union directives: . Compliance with Directive 2002/95/EC of 01/27/03 known as "RoHS" which provides for a restriction of the use of hazardous substances such as lead, mercury, cadmium, hexavalent chromium and polybrominated biphenyl (PBB) and polybrominated diphenyl ether (PBDE) brominated flame retardants from 1 July 2006 . Compliance with Directive 91/338/EEC of 06/18/91 and Decree 94-647 of 07/27/04 Compliance with electromagnetic interference (EMC): . Complies with standard EN 301 489-1: Immunity to electrical transients in explosions Immunity to shock waves (2KV) Plastic material: . Halogen-free plastics. . Marking of parts according to ISO 11469 and ISO 1043. . ISO 7000:2004, Graphical symbols for use on equipment -

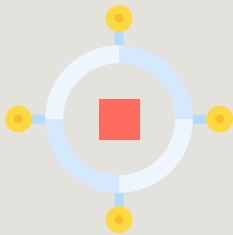
ESP_HA_44



- Node MCU on 5-module DIN box
 - 4 digital Input
 - 4 8A relay outputs
 - 1 analog input (3.2V max input)
- 12V AC/DC power supply



Connectivity: WiFi MQTT



Integrable Sensors/Devices:

Modbus RS485 RTU Node Network/Climate Analyzer; CO2 Sensor (I2C/SPI/Analog), Temp & Humidity Sensor, Light Sensor (SPI/I2C), Volumetric Sensor, Ultrasonic Sensor, Exp Board IO (16Input/8 Output), Dali/Dali2 Node, Pulse Sensor for l/m readings.

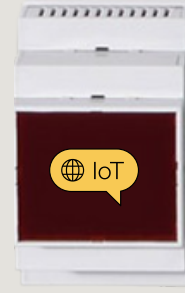




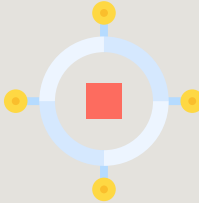


Degree of protection: . Index of protection of the terminals against direct contact: IP2X (IEC/EN 60529) . Index of protection of the front face against direct contact: IP3XD (IEC/EN 60529) . Class II driver, front panel with bezel.



Environmentally friendly - Compliance with European Union directives: . Compliance with Directive 2002/95/EC of 01/27/03 known as "RoHS" which provides for a restriction of the use of hazardous substances such as lead, mercury, cadmium, hexavalent chromium and polybrominated biphenyl (PBB) and polybrominated diphenyl ether (PBDE) brominated flame retardants from 1 July 2006 . Compliance with Directive 91/338/EEC of 06/18/91 and Decree 94-647 of 07/27/04 Compliance with electromagnetic interference (EMC): . Complies with standard EN 301 489-1: Immunity to electrical transients in explosions Immunity to shock waves (2KV) Plastic material: . Halogen-free plastics. . Marking of parts according to ISO 11469 and ISO 1043. . ISO 7000:2004, Graphical symbols for use on equipment -

ESP_HA_SENSOR



	<ul style="list-style-type: none">• Node MCU on 3-module DIN box• 4 digital Input or 2 + Temp/Humidity• 1 DALI output or 0-10V• 1 analog input (3.2V max input)• Temperature Sensor -45°C 125°C AC/DC power supply 12V
	Connectivity: WiFi MQTT
	Integrable Sensors/Devices: Modbus RS485 RTU Node Network/Climate Analyzer; CO2 Sensor (I2C/SPI/Analog), Temp & Humidity Sensor, Light Sensor (SPI/I2C), Volumetric Sensor, Ultrasonic Sensor, Exp Board IO (16Input/8 Output), Dali/Dali2 Node, Pulse Sensor for l/m readings.
	Degree of protection: . Index of protection of the terminals against direct contact: IP2X (IEC/EN 60529) . Index of protection of the front face against direct contact: IP3XD (IEC/EN 60529) . Class II driver, front panel with bezel.
	Environmentally friendly - Compliance with European Union directives: . Compliance with Directive 2002/95/EC of 01/27/03 known as "RoHS" which provides for a restriction of the use of hazardous substances such as lead, mercury, cadmium, hexavalent chromium and polybrominated biphenyl (PBB) and polybrominated diphenyl ether (PBDE) brominated flame retardants from 1 July 2006 . Compliance with Directive 91/338/EEC of 06/18/91 and Decree 94-647 of 07/27/04 Compliance with electromagnetic interference (EMC): . Complies with standard EN 301 489-1: Immunity to electrical transients in explosions Immunity to shock waves (2KV) Plastic material: . Halogen-free plastics. . Marking of parts according to ISO 11469 and ISO 1043. . ISO 7000:2004, Graphical symbols for use on equipment -

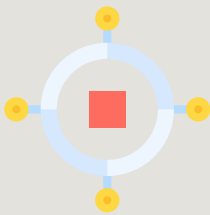
ESP_HA_TAG



Node MCU on RFID Pocket or BOX or Pozzetto 503
NFC Tag Reader std 13.56MHz



Connectivity: WiFi MQTT



Integrable Sensors/Devices:
Modbus RS485 RTU Node Network/Climate Analyzer;
CO2 Sensor (I2C/SPI/Analog), Temp & Humidity Sensor,
Light Sensor (SPI/I2C), Volumetric Sensor, Ultrasonic
Sensor, Exp Board IO (16Input/8 Output), Dali/Dali2
Node, Pulse Sensor for l/m readings.



Degree of protection: . Index of protection of the
terminals against direct contact: IP2X (IEC/EN 60529) .
Index of protection of the front face against direct
contact: IP3XD (IEC/EN 60529) . Class II driver, front
panel with bezel.



Environmentally friendly - Compliance with European Union directives: .
Compliance with Directive 2002/95/EC of 01/27/03 known as "RoHS" which
provides for a restriction of the use of hazardous substances such as lead,
mercury, cadmium, hexavalent chromium and polybrominated biphenyl (PBB)
and polybrominated diphenyl ether (PBDE) brominated flame retardants from 1
July 2006 . Compliance with Directive 91/338/EEC of 06/18/91 and Decree 94-
647 of 07/27/04 Compliance with electromagnetic interference (EMC): .
Complies with standard EN 301 489-1: Immunity to electrical transients in
explosions Immunity to shock waves (2KV) Plastic material: . Halogen-free
plastics. . Marking of parts according to ISO 11469 and ISO 1043. . ISO
7000:2004, Graphical symbols for use on equipment

Accessories



ZIGBEE THERMOSTATIC VALVE

Power supply: 3V, 2xAA batteries, package without battery.

Maximum stroke: 4.5mm

Accuracy: ± 0.5 °C

Set Temp. Range: 5 - 45 °C

Display Temp. Range: 0 - 70 °C

Ambient Temperature. : 0 - 45 °C

Ambient Humidity: 5 - 95% RH (non-condensing)

Storage Temperature. : -5 - 45 °C

Timing error: < 1%

Protection class: IP 20

Buttons: Capacitive touch buttons



ZIGBEE/WIFI THERMOSTAT

For 502 Circular Well, Power supply 230VAC, output Fin Fout

Heating thermostat room temperature controller

programmable for water/electric floor heating

temperature correction of the boiler Gas/water ceiling

high temperature



GATEWAY ZigBee/WiFi

ZigBee WiFi Gateway, Max distance 50m, max management capacity of 50 devices

Accessories



VIDEO INTERCOM

OUTDOOR Video Intercom featuring:
IP55 outdoor keypad
7-inch Indoor Touch Monitor
App for remote response
Digital Output for remote door opening
Night Vision
Possibility of inserting SD for event recording
Motion Detect



Temperature and Humidity Sensor

Temperature and relative humidity sensor:
Humidity range: 0-100% RH
Measuring range: -40-125 ° C (probe section)
Product applications: server room monitoring, weather stations, HVAC, greenhouse warehouses



Temperature sensor

DS18B20 Digital Temperature Probe
Operating Temperature Range: -55 °C ~ + 125 °C
Cable Length 1m



Anemometer and Weather Vane

Professional type wind speed and direction probe,
MODBUS RS485 output, waterproof type and anti-corrosive material, speed up to 30m/s

Accessories



Level Sensor

Level Sensor based on Hydrostatic Pressure, STD reading 0-3m, cable length 10m, useful for reading wells and tanks



WaterMeter_ET_V1

Level sensor based on optical sensor, measuring capacity 0-2.5m depth, AC/DC 12V power supply



Volumetric Sensor

Wired Type PIR Sensor Infrared Motion Detector with 12V NC Output (Wireless or Wired)



Smoke Detector

Fire Detector, reliable without false alarms for domestic and industrial environments (Wireless or Wired)

Accessories



Flood Sensor

Flood sensor NC contact type



RADAR LIGHT Sensor

Radar sensor capable of detecting the passage of a person and/or the presence or absence inside the room;

0-2000lux brightness sensor

Network: ZigBee / Wifi.

V Ceiling mount sensor input: 80-240VAC.

V Wall mount sensor input: USB 5V.

Working temperature: -20 °C ~ + 70 °C

Illuminance sensor: 0-2000 LUX.

Target detection confirmation time: 0-10s

Target disappearance delay time: 2-1500s.

Ceiling mount size:: 0: 61 * H39 mm

Ceiling mount opening size: 53-58mm



Indoor alarm

12VDC internal alarm

120 dB



Outdoor alarm

wired alarm for self-powered outdoor alarm control panel, equipped with anti-opening and anti-tearing device; the sound power uses piezoelectric technology, ensuring low consumption during the alarm phase.

Accessories



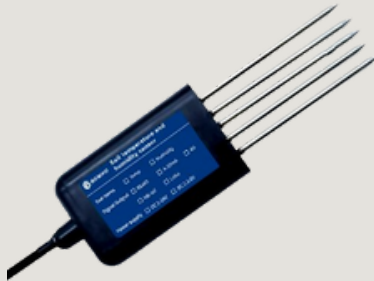
Network Analyzer

WiFi Network Analyzer 0 -63A with adjustable limits load disconnection, for overvoltage, overcurrent, overtemperature, etc.



Irrigation Solenoid Valve

ZigBee Irrigation Solenoid Valve, Programmable by Time and Time, Possibility of Delayed Activation Depending on Weather Conditions.



Terrain Probe

- T&M range: -40-80°C,0-100%RH
- T&M resolution: 0.1°C,1%RH
- T&M accuracy: $\pm 0.5^\circ\text{C}$, $\pm 3\%RH$
- Electronic conductivity range: 0-2000microms/cm
- E-conductivity resolution: 1microms/cm
- E-conductivity accuracy: $\pm 3\%F.s$
- PH value range: 0-14PH
- PH value resolution: 0.01PH
- PH value accuracy: $\pm 3\%F.s$
- NPK value range: 0-1999kg/m2
- NPK value resolution: 1mg/m2
- NPK value accuracy: $\pm 2\%F.s$



Soil Humidity Probe

-Analog type soil humidity sensor
customizable threshold

POWER KIT

Electronica Tirrito is certified (among the few in Italy) as a manufacturer of lithium batteries, therefore it produces and sells small, medium and large sized power kits



- Power Box Main Grid for Video Surveillance kits/ Weather stations/ Smart City, mains power supply during night hours, 24/7 output at 9V, 12V, 24V
- Battery pack Lilon/LiFePO4 12V 30Ah, 12V 70Ah, 12V 120Ah



- Power Box Photovoltaic for Video Surveillance kits / Weather stations / Smart City, charging through PV 200W, 24/7 output at 9V, 12V, 24V
- Battery pack Lilon/LiFePO4 12V 30Ah, 12V 70Ah, 12V 120Ah
- MPPT Charge Controller 100A



- Power Box storage for 12kWh 48V photovoltaic systems.
- LiFePO4 battery pack in 16S configuration from 230Ah/280Ah
- BMS 200A BL, Active Balancer da 5A;
- Parallel systems up to 16 units.

CONTACTS



**ELETTRONICA
TIRRITO**

Street & Industrial Lighting



Address

Via Josemaria Escriva 1236, 94100
Enna



E-mail

info@elettronica-tirrito.it



Telephone number

0935 1865109



Website

www.elettronica-tirrito.it

